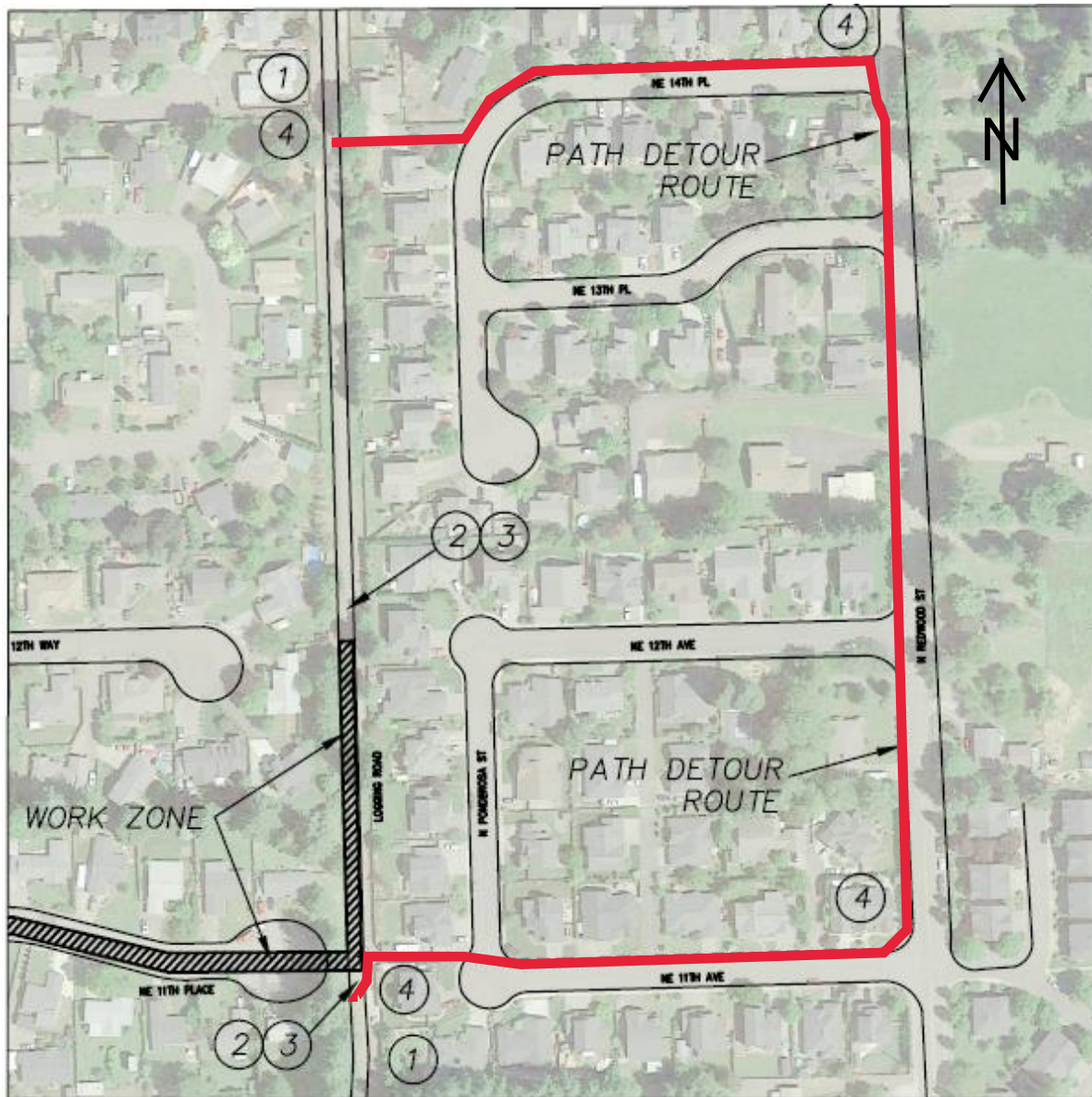




CITY OF CANBY
NE 11TH PLACE SANITARY SEWER REPLACEMENT
LOGGING ROAD PATH DETOUR



INTERMITTENT PATH CLOSURES
BEGINNING JUNE 13TH THROUGH MID JULY
7AM TO 6PM DAILY

Questions about the detour?
Contact Canby Excavating
info@canbyex.com or (503) 266-2792