

Canby Comprehensive Plan & Transportation System Plan

Community Summit #3
January 24 , 6:00pm – 8:00pm



<https://publicinput.com/cultivatingcanby>

Agenda

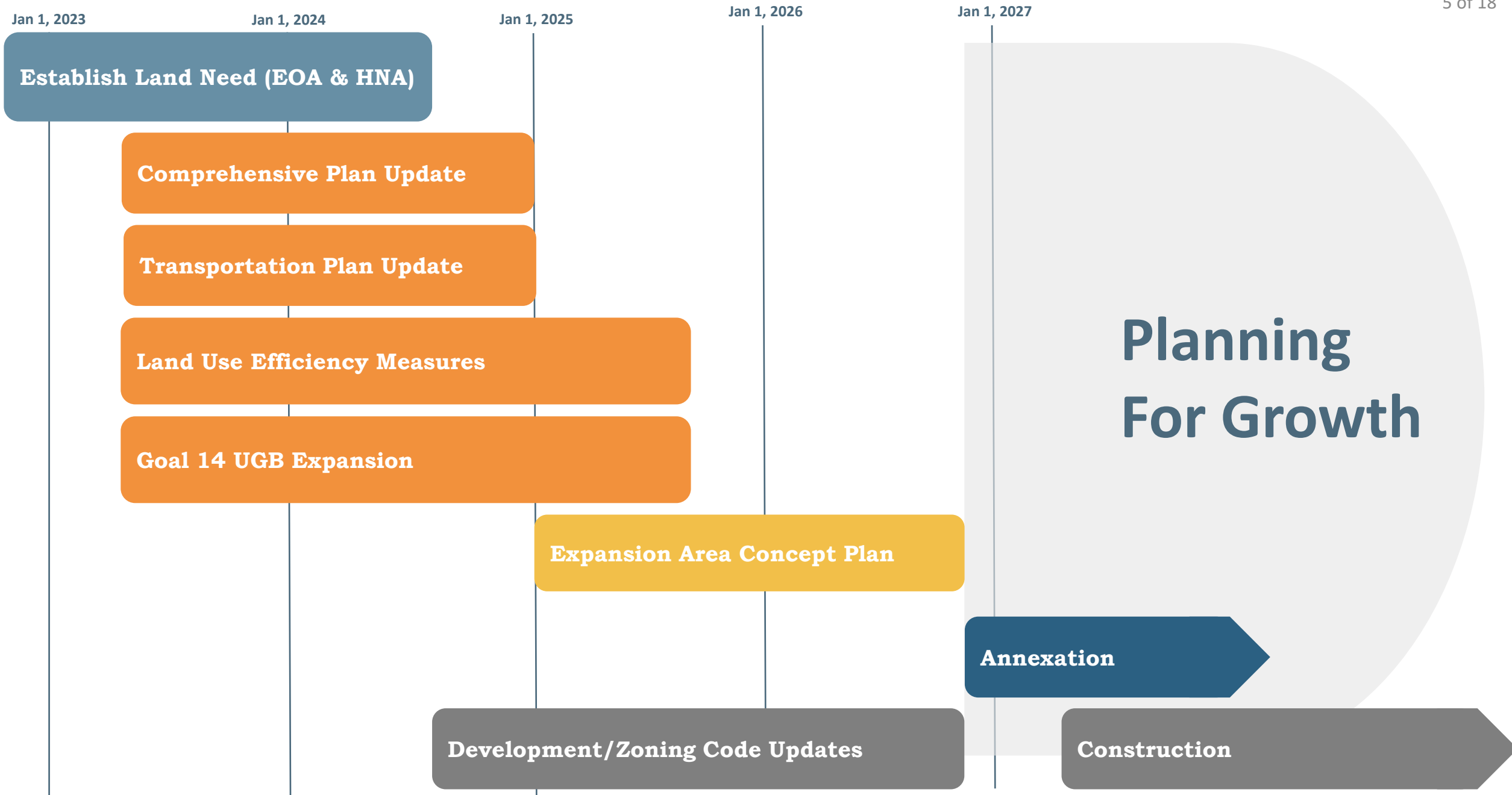


- Introduction
- Overview – Planning for Growth
- Community Engagement and Vision
- Mapping Activity
- Next Steps

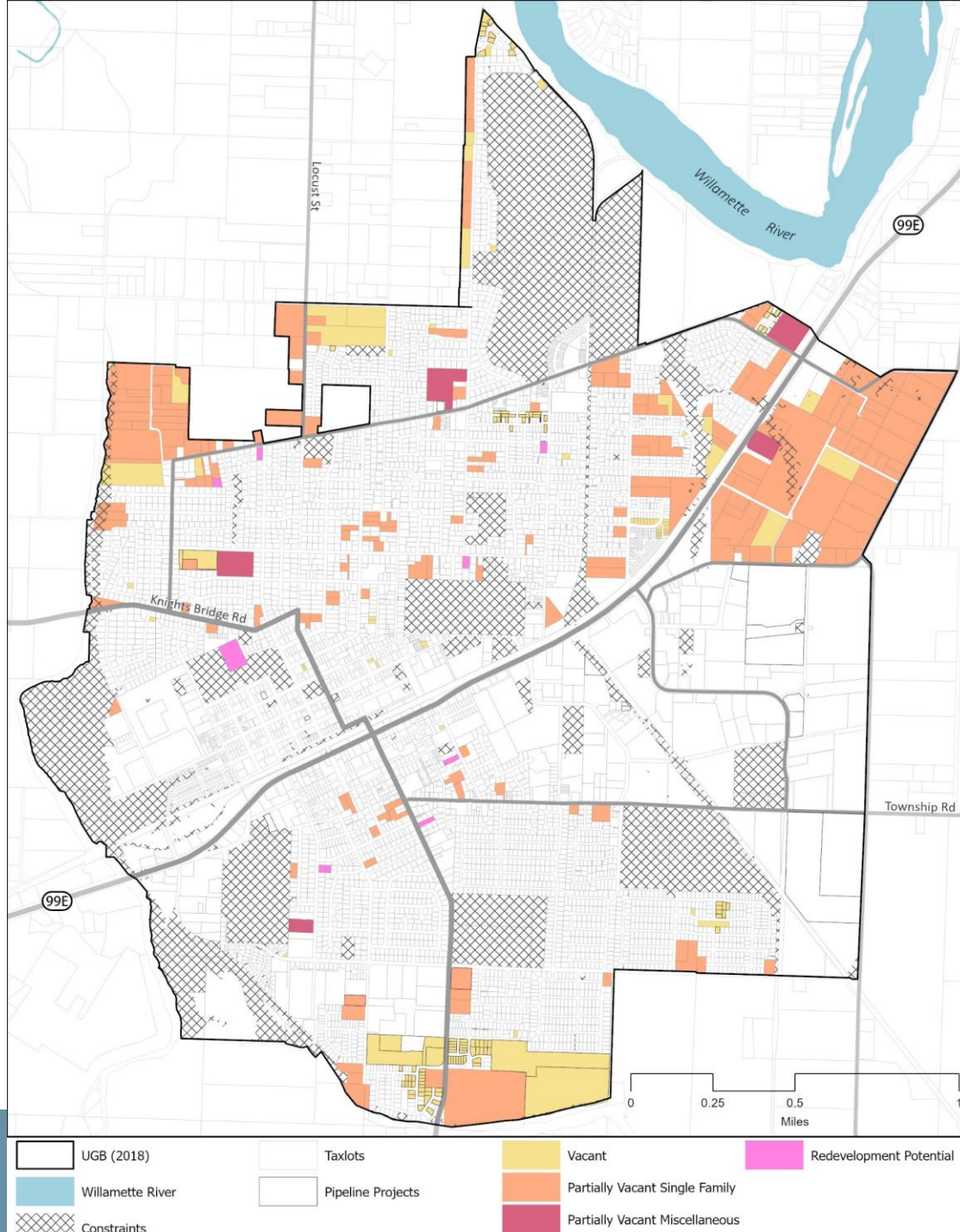
Overview: Planning for Growth

Why is Canby Planning for Growth?

- Cities in Oregon required to maintain 20-year supply of land for jobs and housing.
- Forecast to add 6,000 people by 2043. Total population ~ 25,000.
- Forecasted need for 2,270 housing units and 6,800 jobs.
 - Land need for housing, parks, schools and infrastructure is 50-100 acres.
 - Land need for employment and infrastructure is about 445 acres.

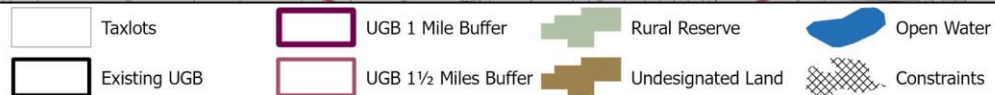
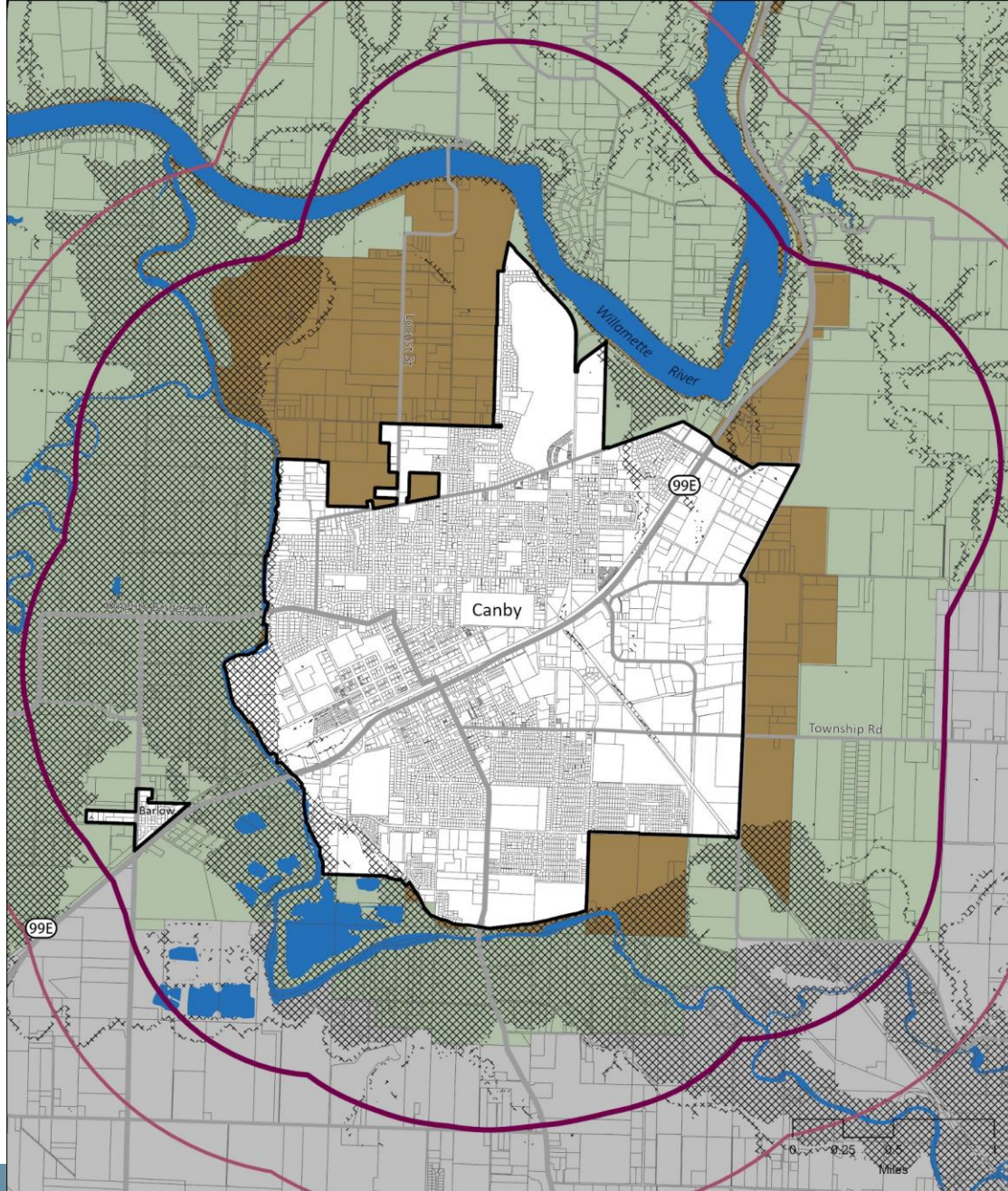


Buildable Land Inventory

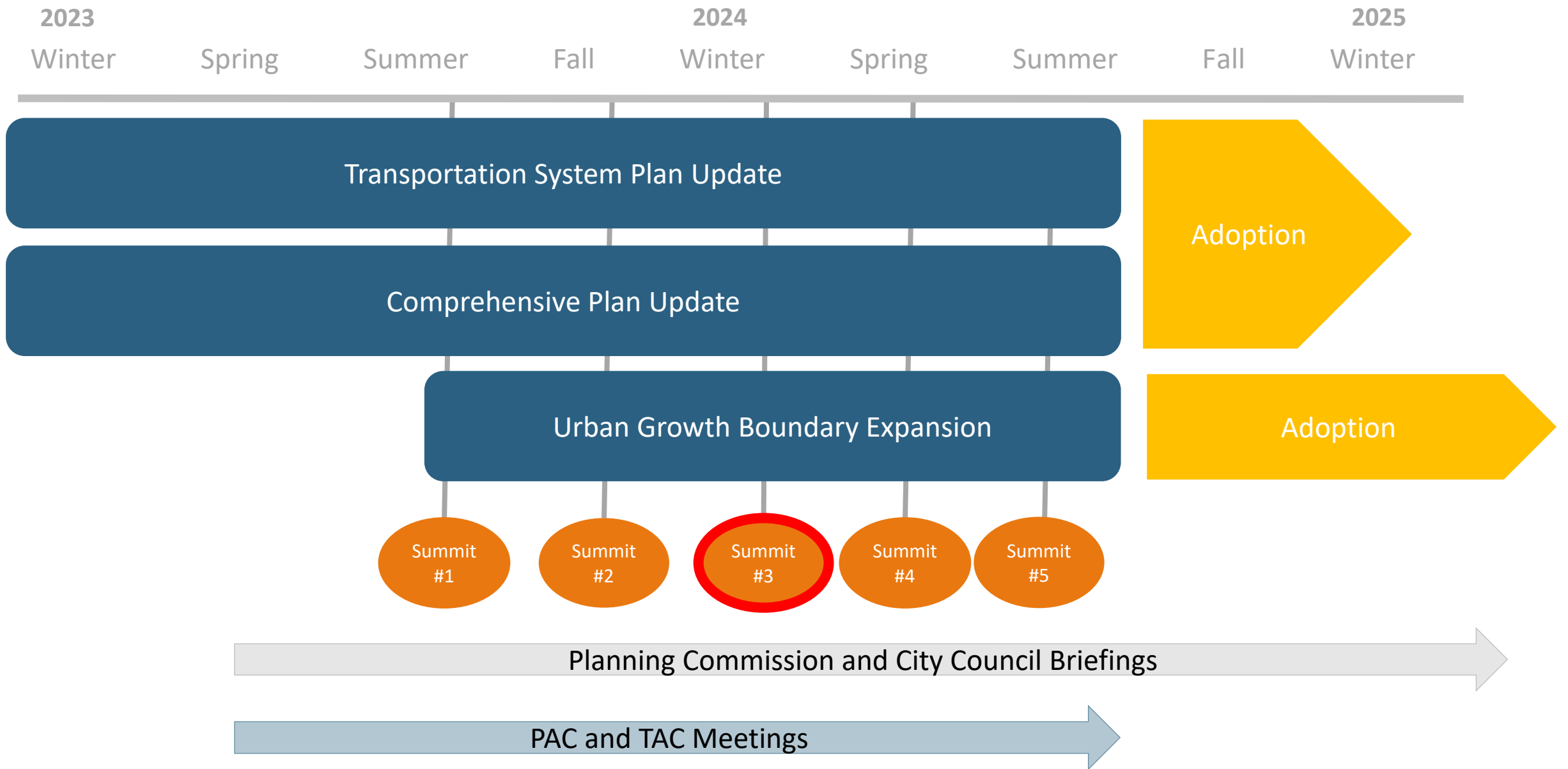


<https://publicinput.com/cultivatingcanby>

Preliminary Study Area



<https://publicinput.com/cultivatingcanby>



Completion Timeline for Key Project Elements

- Housing Needs Analysis Adoption – March 2024
- Land Efficiency Measures – June 2024
- Comprehensive Plan Update – December 2024
- Transportation System Plan Update – December 2024
- UGB Expansion Adoption (City) – June 2025
- UGB Expansion Adoption and Acknowledgement (County and State) – December 2025

Community Engagement and Vision

- 252 participants
- 604 responses
- 1,118 comments

- Attended 5 community events
- Hosted meetings with 11 community groups

- 27 participants discussed their vision for Canby's future growth

- 150 people participated in a mapping activity and imagined how Canby could grow and where development could occur



In 2043

Housing for All



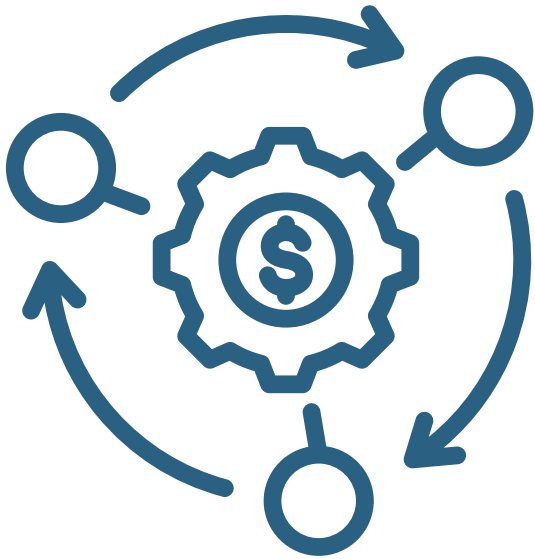
Canby's safe and livable neighborhoods have a range of housing options that support all ages and income levels, with access to services and amenities. Residents across multiple generations can move in, move up, and age in place, ensuring families live and thrive in Canby.

Supportive and Welcoming Community



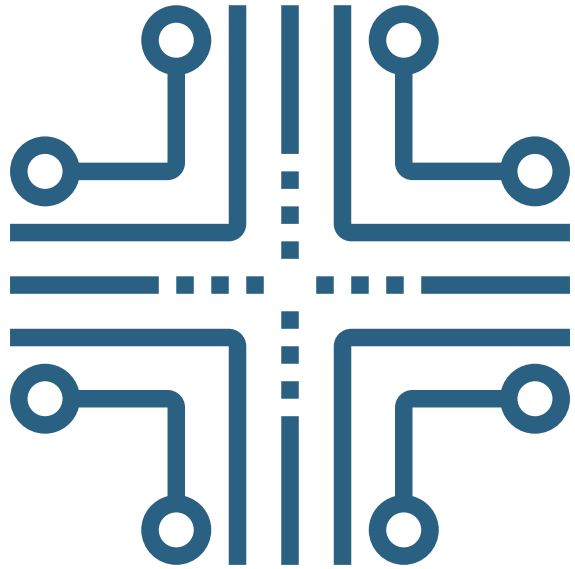
Canby is a place where all people belong and diversity is embraced. Excellent schools, community organizations, and local events strengthen Canby's social fabric. The Canby Community Center and other entertainment and recreational spaces are 'hubs' within the city for youth, families, and seniors to gather and interact.

Diverse and Prosperous Economy



Canby's economy is driven by a variety of businesses that offer stable employment opportunities and higher-wage jobs that allow people to live and work in Canby. Surrounding industrial and agricultural industries put Canby on the map and continue to cultivate economic opportunity. A vibrant downtown and diverse local businesses provide great destinations and experiences. Residents and visitors enjoy the town's dining, shopping, and historic and cultural attractions.

Resilient Public Infrastructure



Canby's reliable public infrastructure meets the needs of our growing community. The transportation network prioritizes safety, connectivity, and accessibility, while reducing reliance on Highway 99E for local trips. Residents enjoy a network of complete streets that safely connect neighborhoods to parks, schools, downtown, the Molalla River, and other amenities. Utilities such as water, sewer, stormwater, and power support established neighborhoods and are strategically planned in developing areas of the city.

Network of Connected Greenspaces



Canby's agricultural heritage and natural landscape can be seen and felt throughout the city. Residents benefit from an interconnected system of parks and trails that promote health, recreation, and accessibility for all ages. Beautiful Wait Park at the heart of Canby is equipped with facilities that support local gatherings. Safe trails and paths, such as the Logging Road Trail, provide access to Canby's natural areas and the riverfront. A dense tree canopy is present throughout Canby, where residents and workers can seek shade while enjoying their natural surroundings.

Mapping the Future of Canby

<https://publicinput.com/cultivatingcanby>

Mapping Activity

Each table will collaborate around a large map to record ideas.

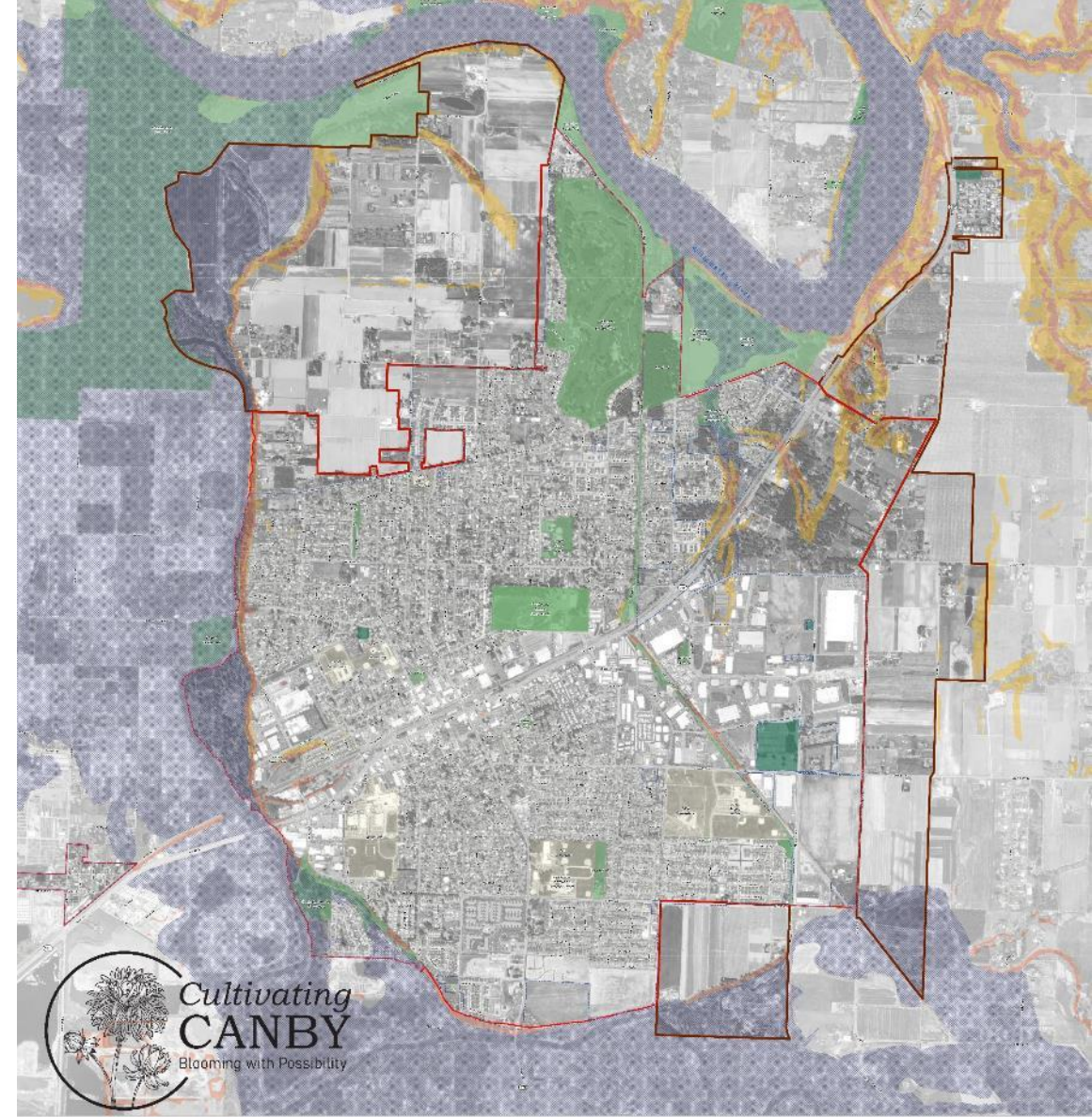
Identify areas for preservation and areas for development.



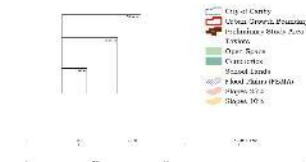
Mapping Activity

When marking up your map, consider these questions:

1. How and where should Canby grow?
2. What uses or connections are needed?
3. What should we preserve?



City of Canby, Oregon

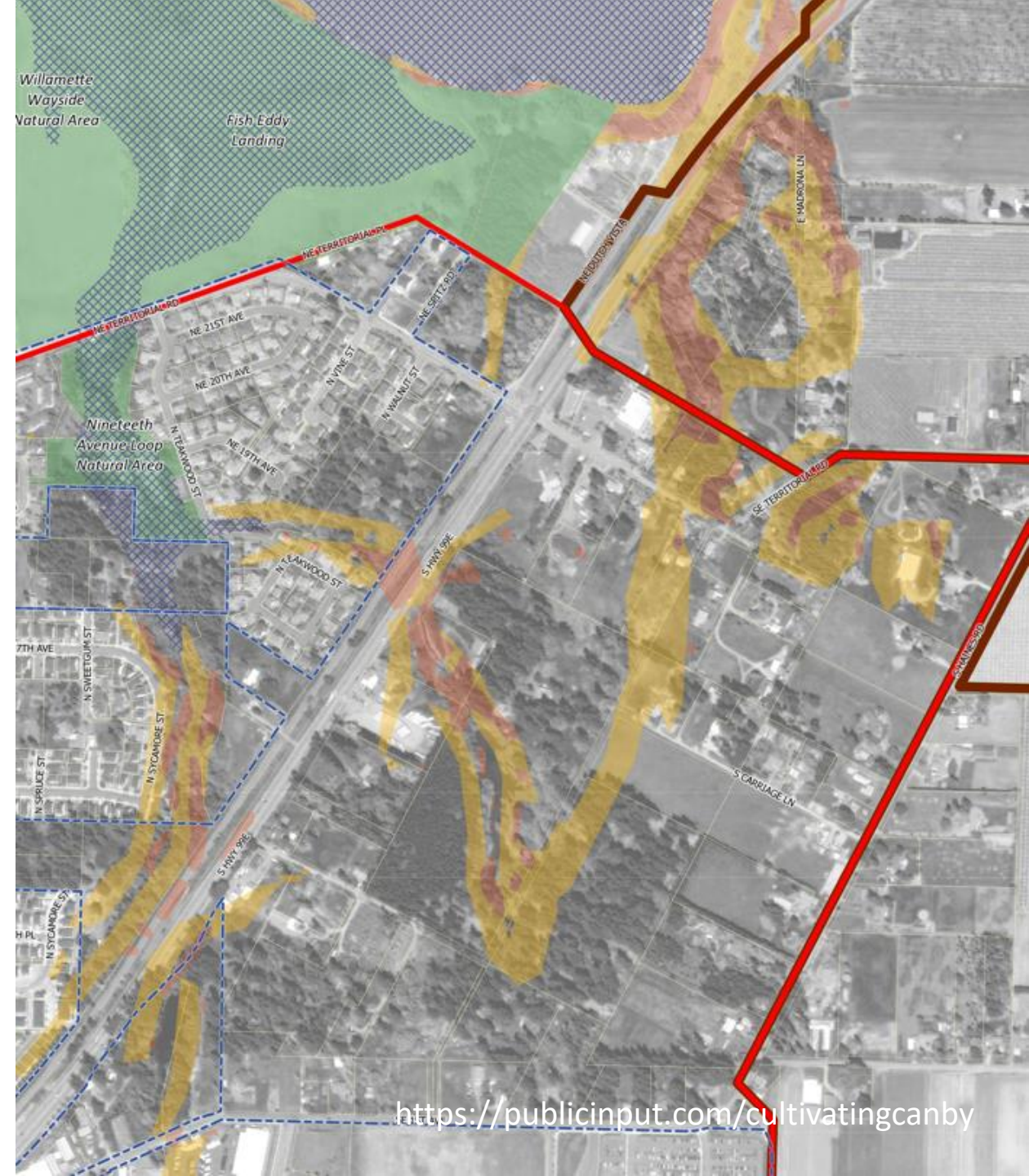
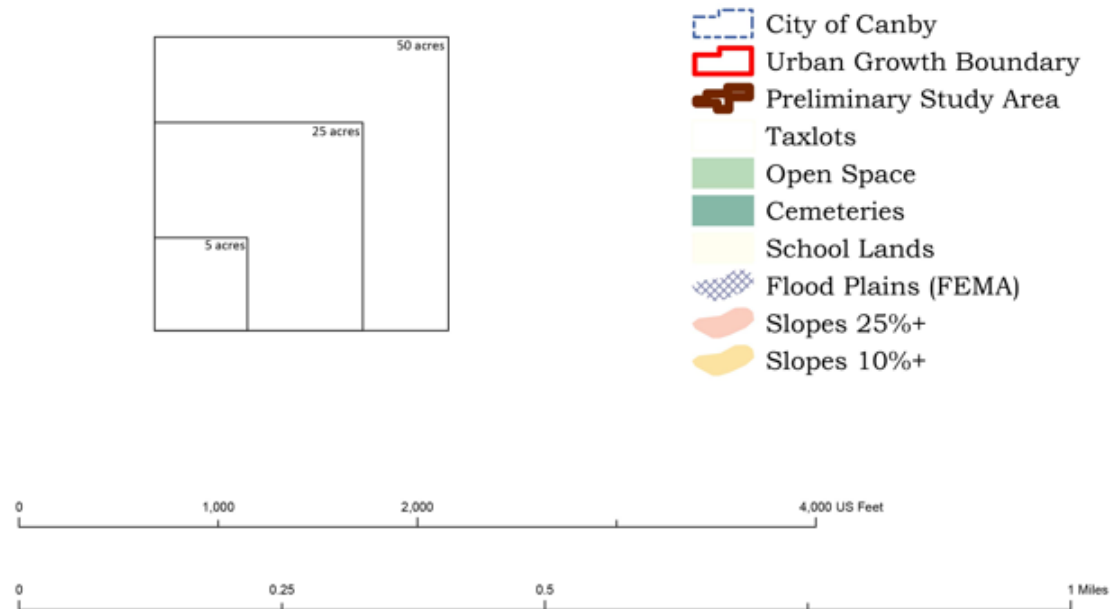


BIG IDEAS

<https://publicinput.com/cultivatingcanby>

The Map

City of Canby, Oregon



<https://publicinput.com/cultivatingcanby>

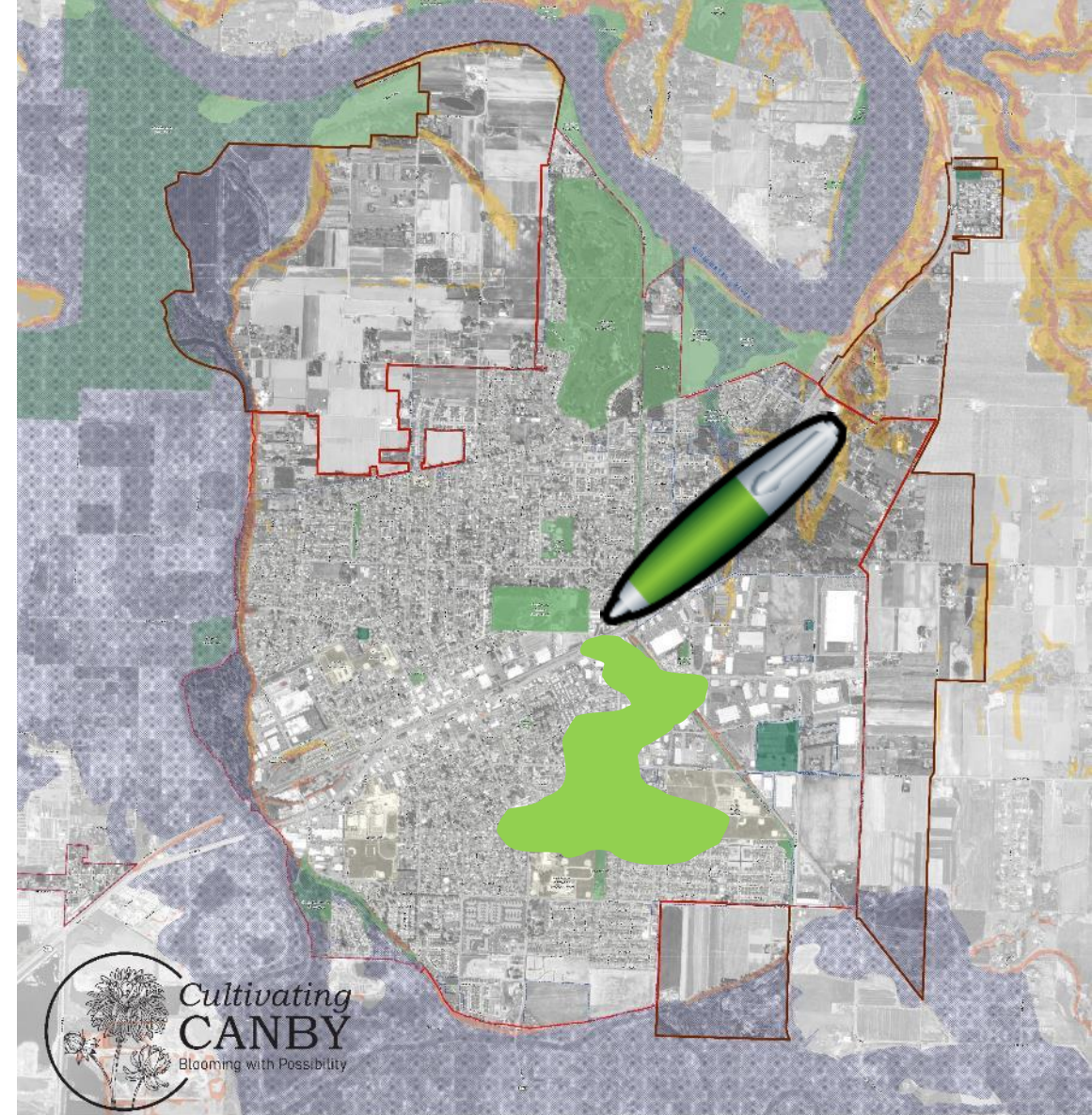
Show us your ideas for the future:

1. Arrange stickers on your map in areas of change. Try to use all of your stickers!
2. Draw in connections (roads, trails, transit) and open space
3. Record comments and “big ideas”
4. Present your map to group

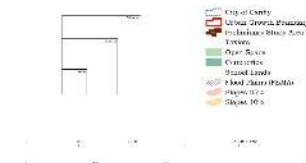


Draw areas to protect or enhance:

- Trails
- Natural Areas
- Green Corridors
- Historic Buildings/Districts
- Other Significant Areas



City of Canby, Oregon



BIG IDEAS

<https://publicinput.com/cultivatingcanby>

Draw transportation infrastructure needs:

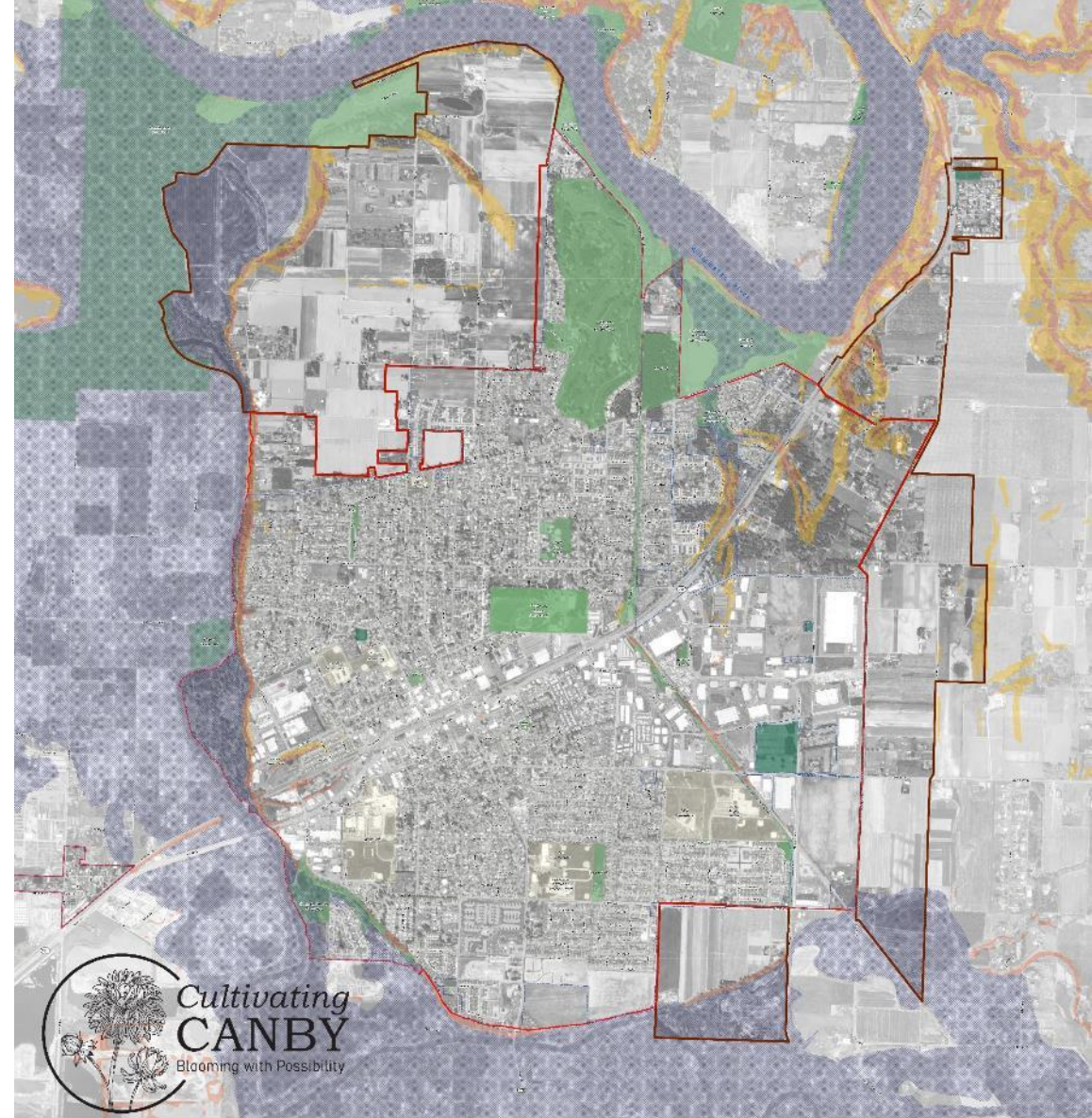
Roads



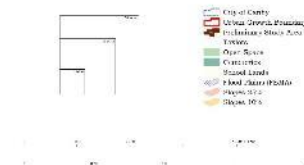
Transit



Bikes and Trails



City of Canby, Oregon



BIG IDEAS

<https://publicinput.com/cultivatingcanby>

Workshop Stickers



20
Acres

5
Acres

2043 Growth Forecast

- 6,000 New Residents
- 2,265 New Households
- 6,778 New Jobs

Low Density
Residential

Suburban Development
Predominately single-family
housing

86 Housing Units
20 Jobs



Medium Density
Residential

Single-family homes and
townhomes with some multi-
family housing, such as condos
and senior housing

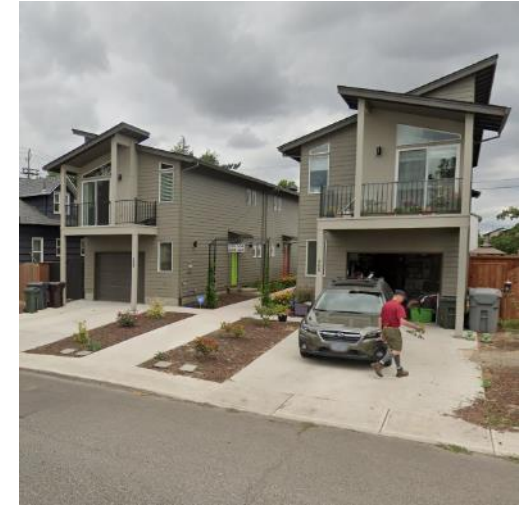
26 Housing Units
9 Jobs



High
Density
Residential

Multi-family housing and
apartment complexes

87 Housing Units
19 Jobs



Mixed
Use

Small scale neighborhood shops and
downtown development

56 Housing Units
45 Jobs



Commercial

Large scale big box development
along corridors

0 Housing Units
58 Jobs



Office

Offices and business parks

0 Housing Units

73 Jobs



Mixed Manufacturing

Manufacturing and industrial

0 Housing Units

194 Jobs



Parks

Parks and greenspaces

0 Housing Units

0 Jobs



Community Services


Community Centers, libraries, schools, senior centers

0 Housing Units

4 Jobs



Record your ideas on the comment sheets



Mapping Workshop Agenda
November 14th | 6:00am - 7:30pm

Welcome! We're excited that you are participating in this workshop. Together, we are creating a long-term vision for the future of Canby. Thank you for getting involved.

Why a mapping workshop? When developing a vision for where future growth should occur, it is important to identify opportunities and needs for the future of Canby. This workshop is a key part of the [envision for Canby](#) process.


EVENT AGENDA

Part One: Presentation (30 min.)
The project team will give a presentation about the work that has been done to date, and the presentation also explains the interactive mapping process.

Part Two: Map Activity (60 min.)
Participants work as a group to identify opportunities and needs for the future of Canby by pointing out where they want to see different types of development in the Canby area. They will be asked to place stickers on the map representing different development types such as residential, commercial, industrial, etc. Participants are also encouraged to draw in the map around (sidewalks, bike routes, trails, roads, etc.) and suggest areas for preservation or open space. Participants are also encouraged to write down ideas and comments on the map and discuss them with the group.

Part Three: Report Back (30 min.)
Each table will choose a spokesperson to give a report back to the larger group on the ideas and comments from their table.

Cultivating Canby Visioning Workshop



Record your table's ideas here. Table # _____

Cultivating Canby Visioning Workshop | November 2023

When recording your ideas, consider these questions:

How should Canby grow and develop?

What goals do we have?

How can we improve our community?



Choose presenters
and share your ideas
with the group!



What Happens Next?



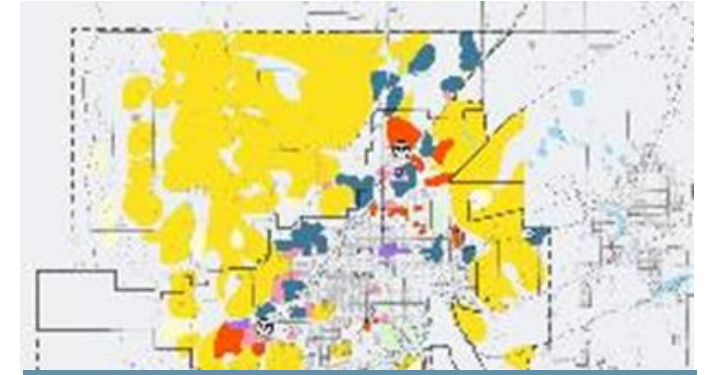
Workshop maps are created by the community

- Big ideas get incorporated into scenarios



Information is digitized to inform the scenarios

- Each has the same jobs & population forecast
- Development types are more specific than the workshop stickers



Scenarios are presented to the community

- Highlight key indicators
- Scenarios refined into one Preferred Scenario

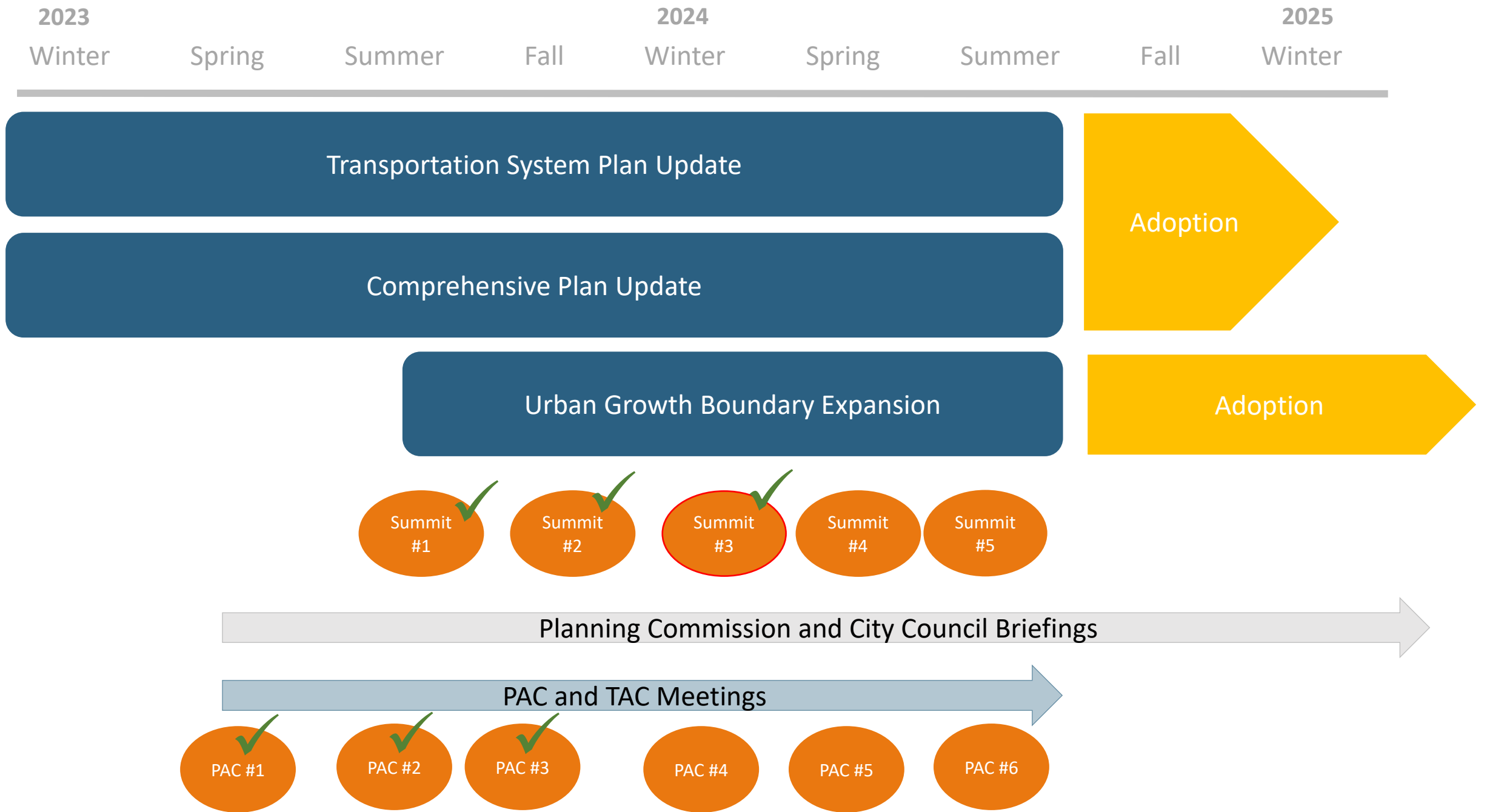


A man in a green t-shirt is pointing at a large map or plan on a wall. The map shows various colored areas, possibly representing different land use zones. In the background, a projection screen displays a building and the text "What's like now".

Evaluate input from tonight's activity

Develop alternative growth scenarios that reflect vision themes and input

Draft goals and policies around those themes



Thank you!



<https://publicinput.com/cultivatingcanby>