



Canby Comprehensive Plan & Transportation Systems Plan

Community Summit #2
November 14, 6:00pm – 8:00pm



<https://publicinput.com/cultivatingcanby>

Agenda



- Introduction
- Project Overview
- Community Engagement and Vision
- Growth Maps
- Next Steps

Project Overview

2023 Winter Spring Summer Fall 2024 Winter Spring Summer Fall 2025 Winter

Transportation System Plan Update

Comprehensive Plan Update

Urban Growth Boundary Expansion

Adoption

Summit #1

Summit #2 & #3

Summit #4

Summit #5

Planning Commission and City Council Briefings

Project Advisory Committee Meetings (PAC)

Technical Advisory Committee Meetings (TAC)

Community Engagement and Vision

- 197 participants
- 519 responses
- 1,008 comments

- Attended 5 community events
- Hosted meetings with 11 community groups

- 27 participants discussed their vision for Canby's future growth



In 2043

Housing for All



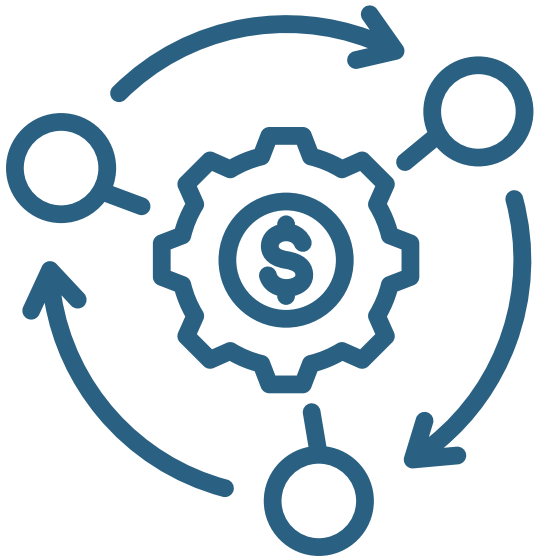
Canby's safe and livable neighborhoods have a range of housing options that support all ages and income levels, with access to services and amenities. Residents across multiple generations can move in, move up, and age in place, ensuring families live and thrive in Canby.

Supportive and Welcoming Community



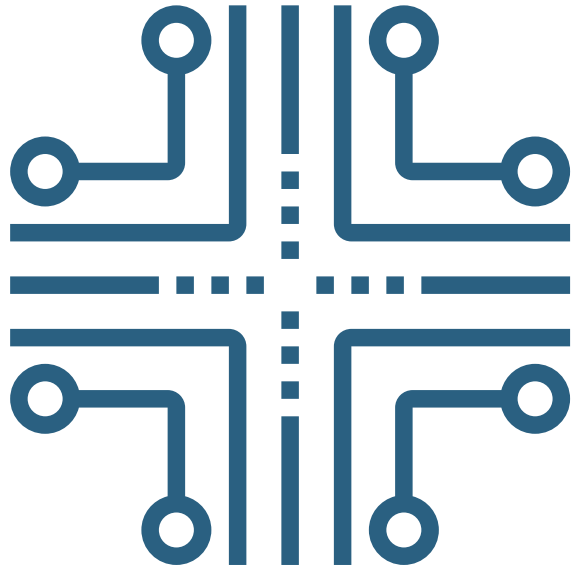
Canby is a place where all people belong and diversity is embraced. Excellent schools, community organizations, and local events strengthen Canby's social fabric. The Canby Community Center and other entertainment and recreational spaces are 'hubs' within the city for youth, families, and seniors to gather and interact.

Diverse and Prosperous Economy



Canby's economy is driven by a variety of businesses that offer stable employment opportunities and higher-wage jobs that allow people to live and work in Canby. Surrounding industrial and agricultural industries put Canby on the map and continue to cultivate economic opportunity. A vibrant downtown and diverse local businesses provide great destinations and experiences. Residents and visitors enjoy the town's dining, shopping, and historic and cultural attractions.

Resilient Public Infrastructure



Canby's reliable public infrastructure meets the needs of our growing community. The transportation network prioritizes safety, connectivity, and accessibility, while reducing reliance on Highway 99E for local trips. Residents enjoy a network of complete streets that safely connect neighborhoods to parks, schools, downtown, the Molalla River, and other amenities. Utilities such as water, sewer, stormwater, and power support established neighborhoods and are strategically planned in developing areas of the city.

Network of Connected Greenspaces

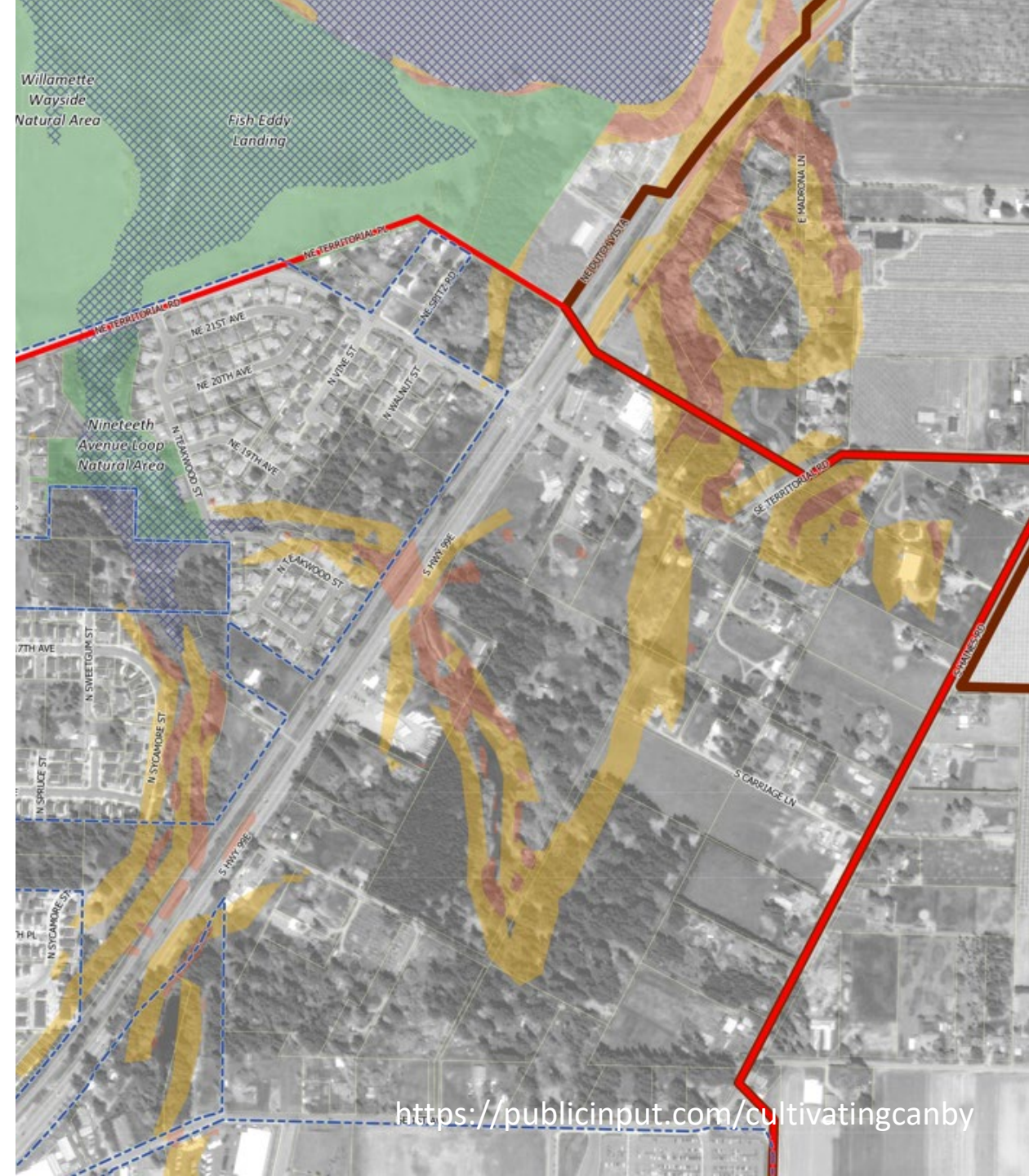
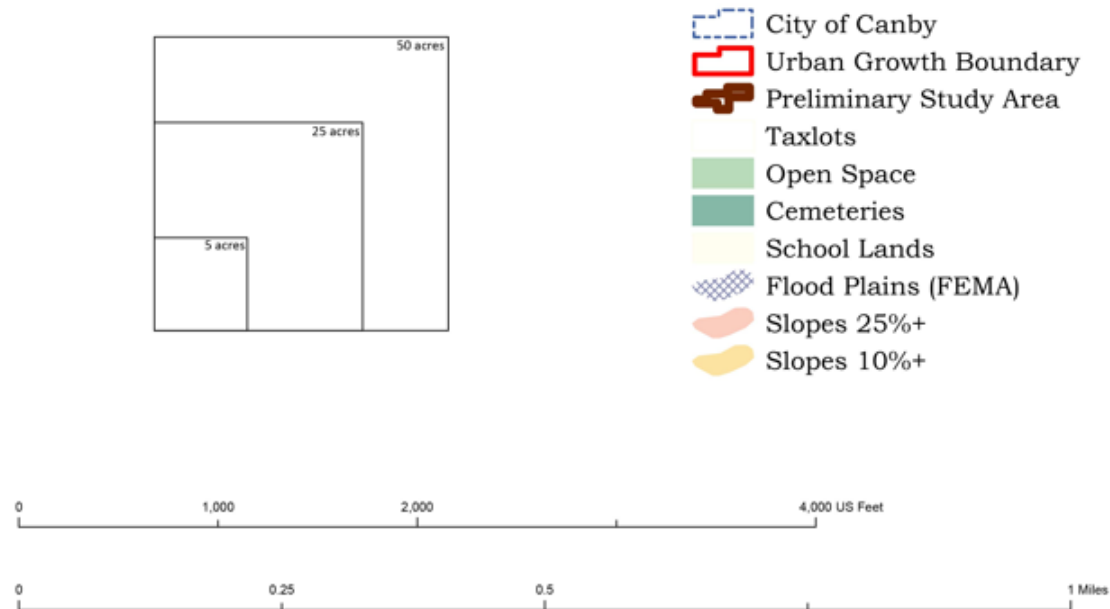


Canby's agricultural heritage and natural landscape can be seen and felt throughout the city. Residents benefit from an interconnected system of parks and trails that promote health, recreation, and accessibility for all ages. Beautiful Wait Park at the heart of Canby is equipped with facilities that support local gatherings. Safe trails and paths, such as the Logging Road Trail, provide access to Canby's natural areas and the riverfront. A dense tree canopy is present throughout Canby, where residents and workers can seek shade while enjoying their natural surroundings.

Growth Maps

The Map

City of Canby, Oregon



<https://publicinput.com/cultivatingcanby>

Mapping Activity

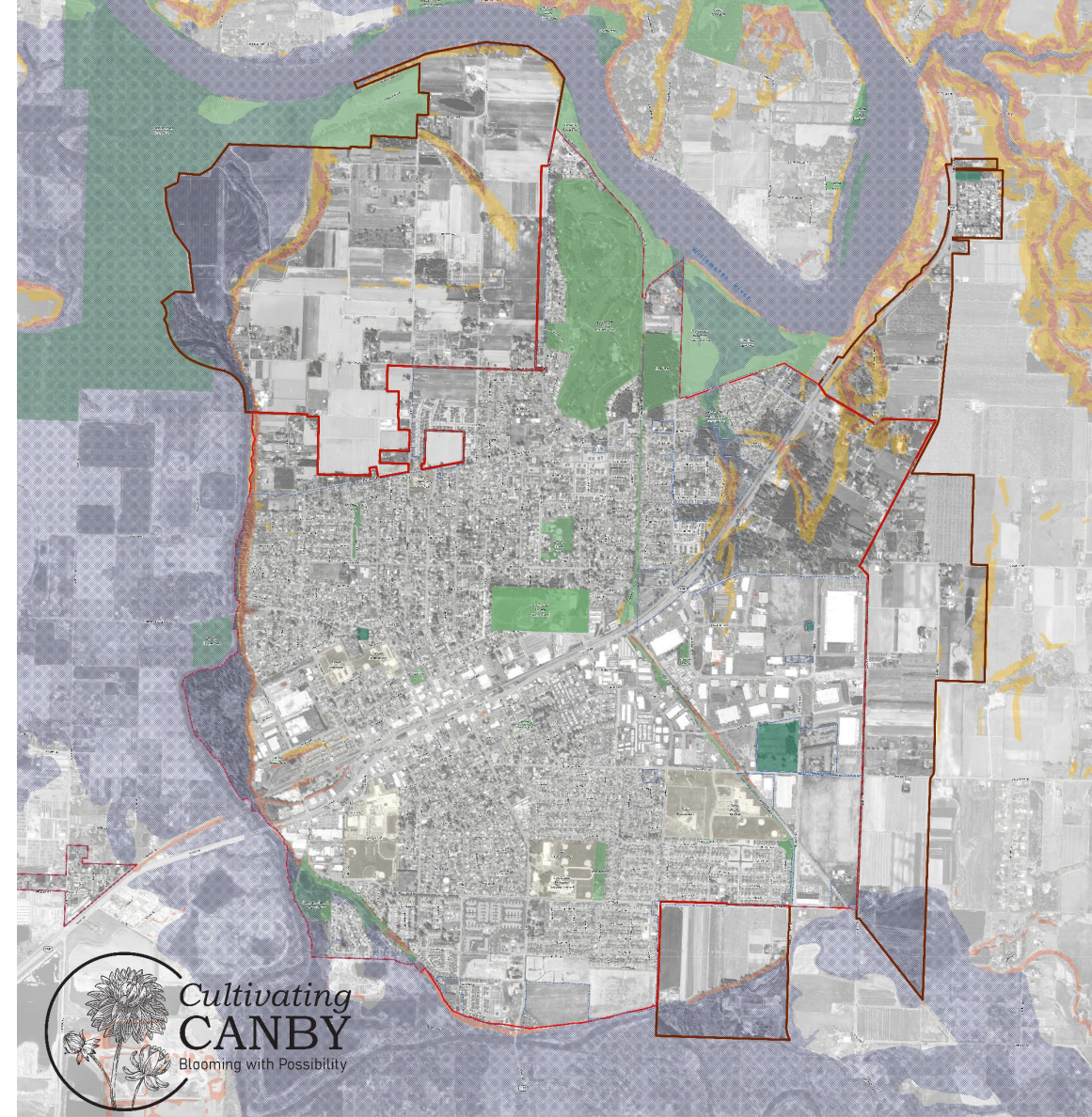
Each table will collaborate around a large map to record ideas.

Identify areas for preservation and areas for development.

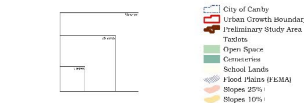


Mapping Activity

1. How and where should Canby grow?
2. What uses or connections are needed?
3. What should we preserve?



City of Canby, Oregon



BIG IDEAS

<https://publicinput.com/cultivatingcanby>

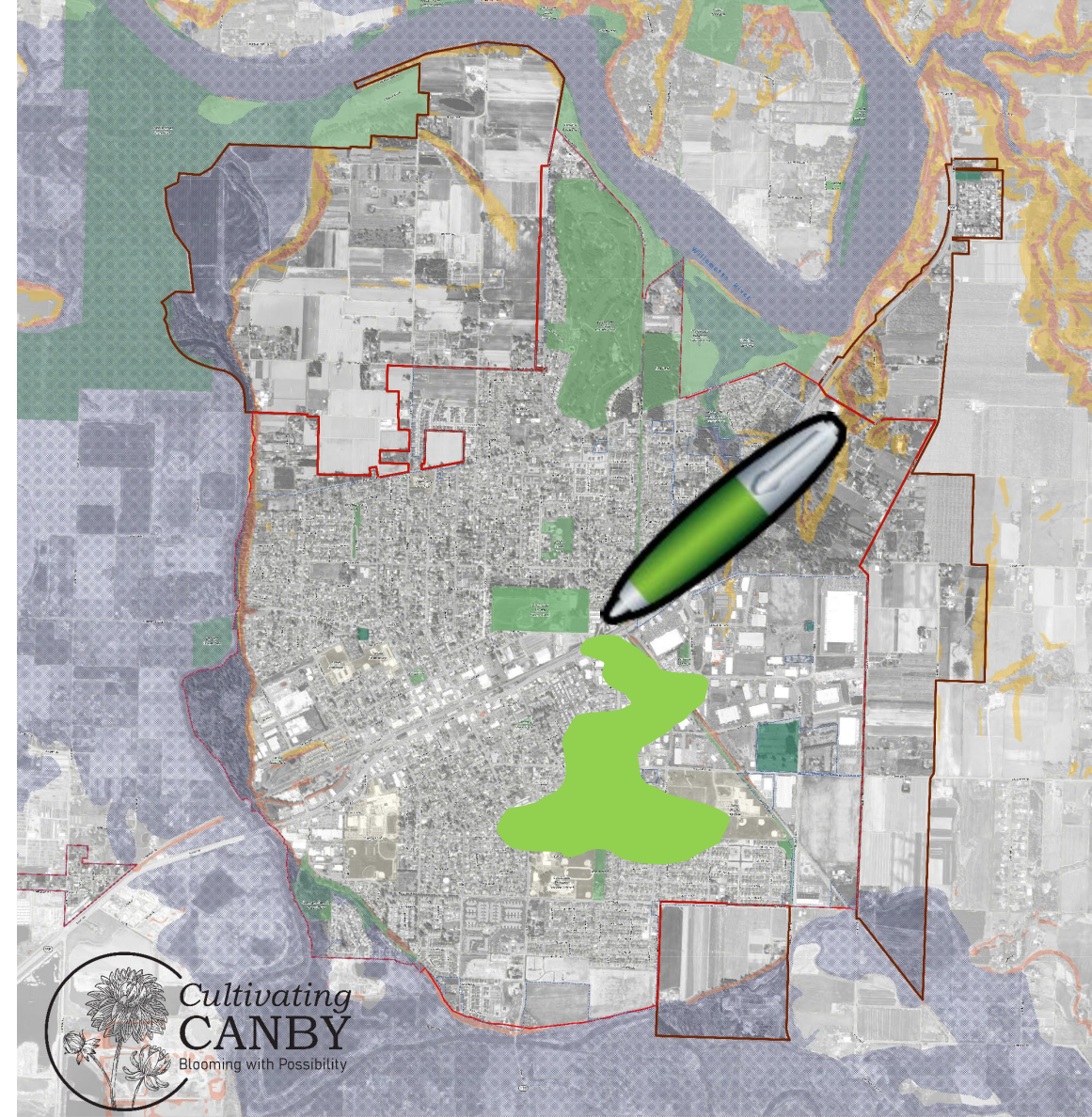
Show us your ideas of the future:

1. Arrange stickers on your map in areas of change
2. Draw in connections (roads, trails, transit) and open space
3. Record comments and “big ideas”
4. Present your map to group

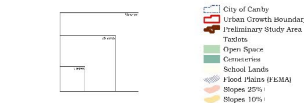


Draw areas to protect:

- Trails
- Natural Areas
- Green Corridors
- Historic Districts
- Other Significant Areas



City of Canby, Oregon



BIG IDEAS

<https://publicinput.com/cultivatingcanby>

Draw transportation infrastructure needs:

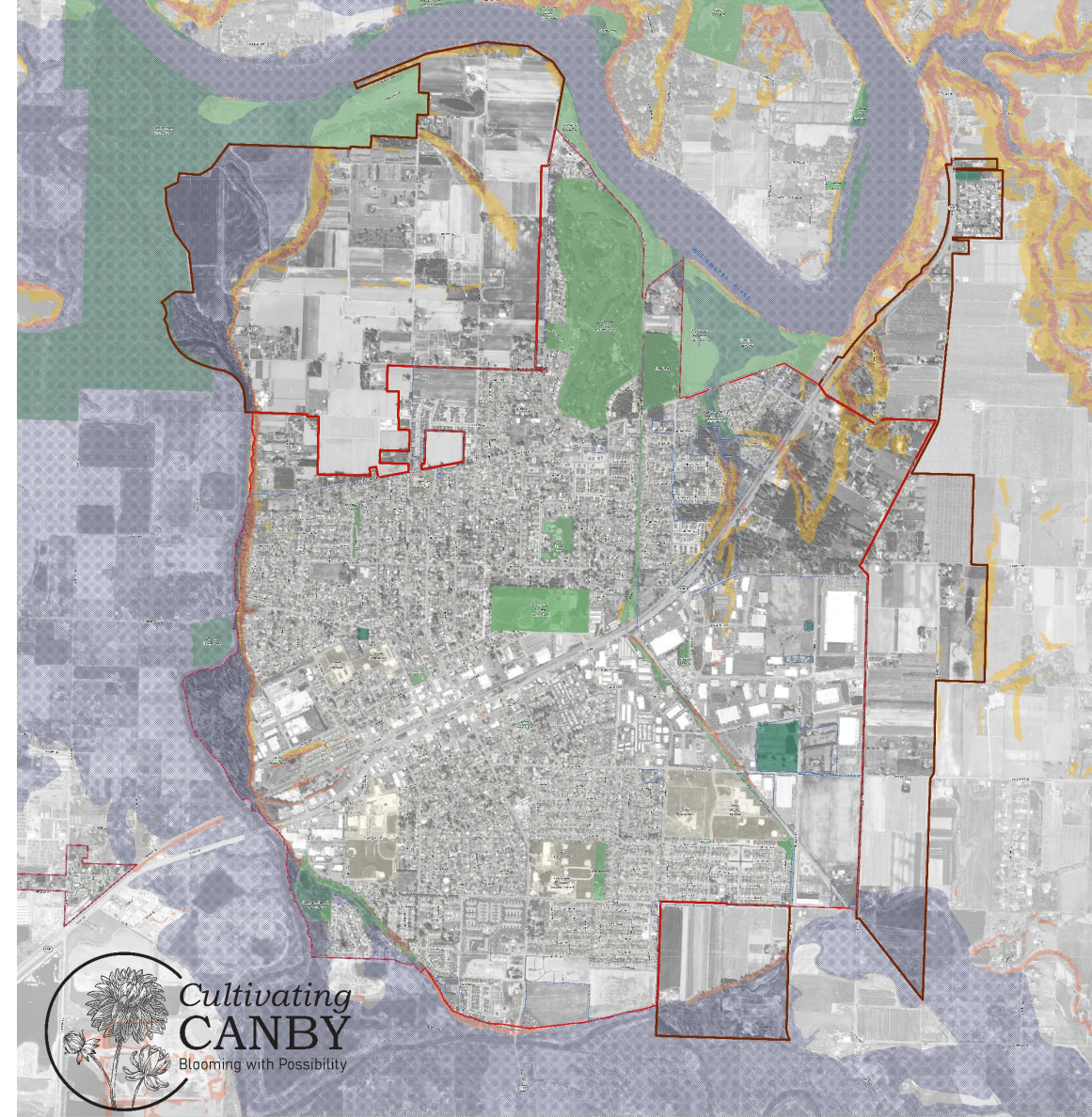
Roads



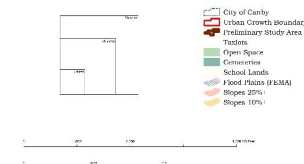
Transit



Bikes and Trails



City of Canby, Oregon



BIG IDEAS

<https://publicinput.com/cultivatingcanby>

Workshop Chips



20
Acres

5
Acres

2043 Growth Forecast

- 6,000 New Residents
- 2,265 New Households
- 6,778 New Jobs

Low Density
Residential

Suburban Development
Predominately single-family
housing

86 Housing Units
20 Jobs



Medium Density
Residential

Single-family homes and
townhomes with some multi-
family housing, such as condos
and senior housing

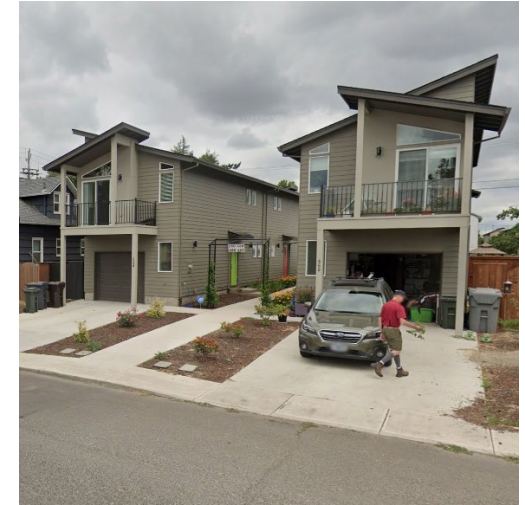
26 Housing Units
9 Jobs



High
Density
Residential

Multi-family housing and
apartment complexes

87 Housing Units
19 Jobs



Mixed
Use

Small scale neighborhood shops and
downtown development

56 Housing Units
45 Jobs



Commercial

Large scale big box development
along corridors

0 Housing Units
58 Jobs



Office

Offices and business parks

0 Housing Units

73 Jobs



Mixed Manufacturing

Manufacturing and industrial

0 Housing Units

194 Jobs



Parks

Parks and greenspaces

0 Housing Units

0 Jobs



Community Services

Community Centers, libraries, schools, senior centers

0 Housing Units

4 Jobs



Chip Trading Guide

Office

=

Commercial

Low Density
Residential

=

Hgh
Density
Residential

Mxed
Use

=

Commercial

Medium Density
Residential

Medium Density
Residential

**How should Canby grow
and develop?**

What goals do we have?

**How can we improve
our community?**



Record your ideas on your comment sheets



Mapping Workshop Agenda

November 14th | 6:00

Welcome! We're excited that you are participating in this workshop. Together, we are creating a long-term vision for the future of Canby. Thank you for getting involved.

Why a mapping workshop? When developing a vision for where future growth should occur, it is important to identify opportunities and needs for the future of Canby. This workshop is a key part of the [envision for Canby](#) process.

EVENT AGENDA

Part One: Presentation (30 min.)

The project team will give a presentation about the work that has been done to date, and the presentation also explains the interactive mapping activity.

Part Two: Map Activity (60 min.)

Participants work as a group to identify opportunities and needs for the future of Canby by pointing out where they want to see different types of development in the Canby area. They will be asked to place stickers on the map representing different development types such as residential, commercial, industrial, etc. Participants are also encouraged to draw in the map around (sidewalks, bike routes, trails, roads, etc.) and suggest areas for preservation or open space. Participants are also encouraged to write down ideas and comments on the map and discuss them with the group.

Part Three: Report Back (30 min.)

Each table will choose a spokesperson to give a report back to the larger group on the ideas and comments from their table.

Cultivating Canby Visioning Workshop



Record your table's ideas here. Table # _____

Cultivating Canby Visioning Workshop | November 2023

Choose presenters
and share your ideas
with the group!



What happens next?



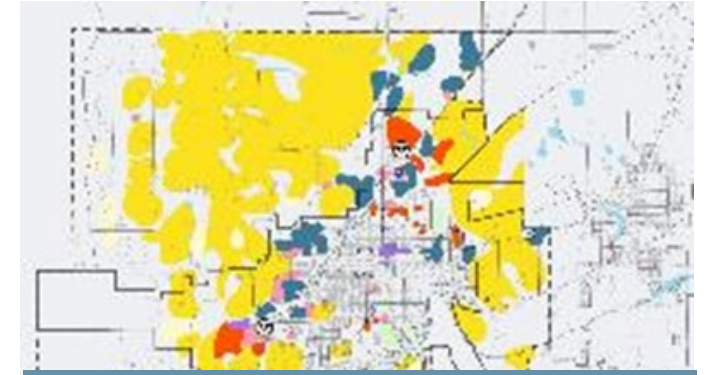
Workshop Maps are Created by the Public

- Big ideas get incorporated into scenarios



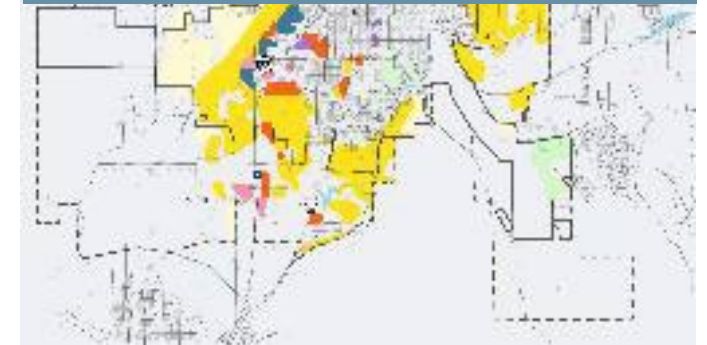
Information is Digitized to Inform the Scenarios

- Each has the same jobs & population forecast
- Development types are more specific than the workshop chips



Scenarios are Presented to the Public

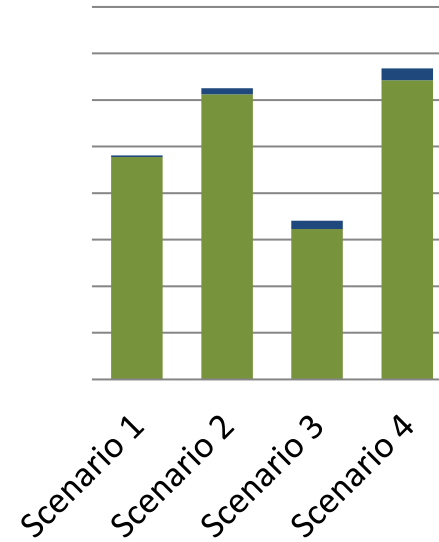
- Highlight key indicators
- Scenarios refined into one Preferred Scenario



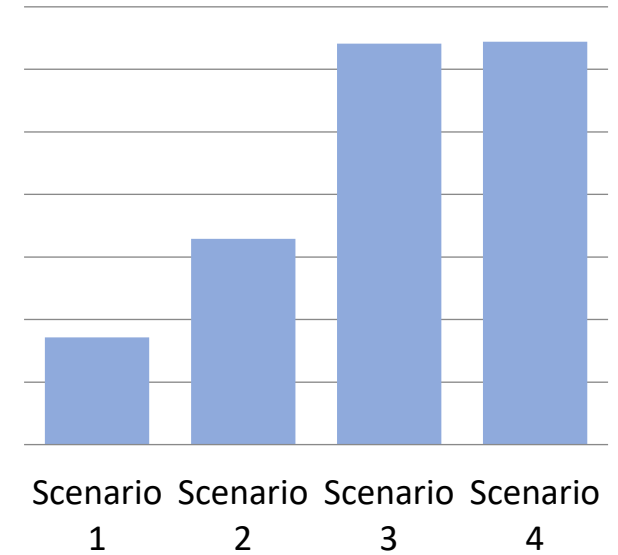
How does each scenario perform?



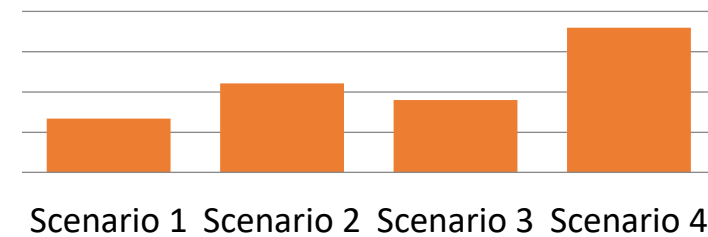
Developed Acres



Housing Units per Gross Acre



New Road Lane Miles



Communicating the results

PERFORMANCE

- = high
- ◐ = medium
- ◑ = low

	A	B	C	D
Expands transit options (bus, rail, streetcar)	◑	◐	◐	●
Minimizes the amount of time people spend in the car	◑	◐	◐	●
Emphasizes construction of new neighborhoods	●	◐	●	◑
Promotes construction of a wide range of housing types	◑	●	◐	●
Promotes reinvestment on underutilized city land	◑	●	◐	●
Locates more new homes close to parks and open space	◑	◐	●	●
Reinvigorates downtown as a cultural, job, and housing center	◑	●	◐	●
Retains and attracts young people, young families, and entrepreneurs	◑	●	◐	●

CATEGORY

MEANING

A
Trends Continue

B
Main Streets

C
New Centers

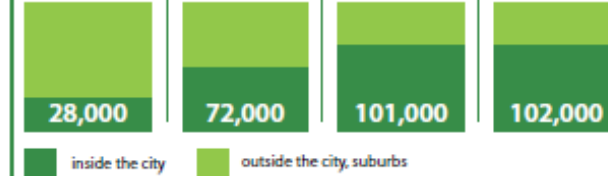
D
Centered City

PEOPLE

Population Growth
out of a total 164,000 expected residents

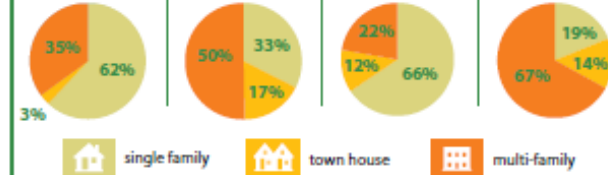
Tulsa's future vitality depends a lot on its ability to grow.

Each scenario performs differently in how it attracts newcomers to the city, instead of the suburbs.



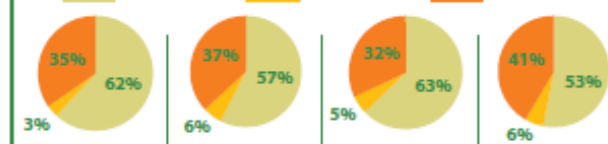
New Housing Mix
% of all new construction

Each scenario emphasizes a different mix of new kinds of housing.



Total Housing Mix
% of all housing units

But overall, each scenario would result in Tulsa remaining a city with a majority of single-family homes.

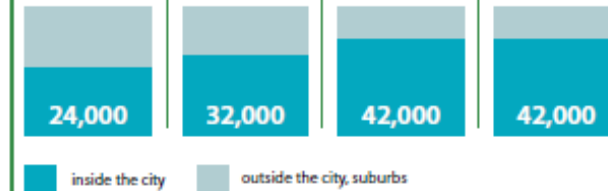


ECONOMY

New Jobs Added
out of a total 53,000 expected jobs

The City of Tulsa competes for jobs with the suburbs and other jurisdictions around it.

Each scenario performs differently in how many new jobs Tulsa is able to attract.



Value of New Construction

Each scenario would stimulate a different amount of new construction investment in the city based on new growth.



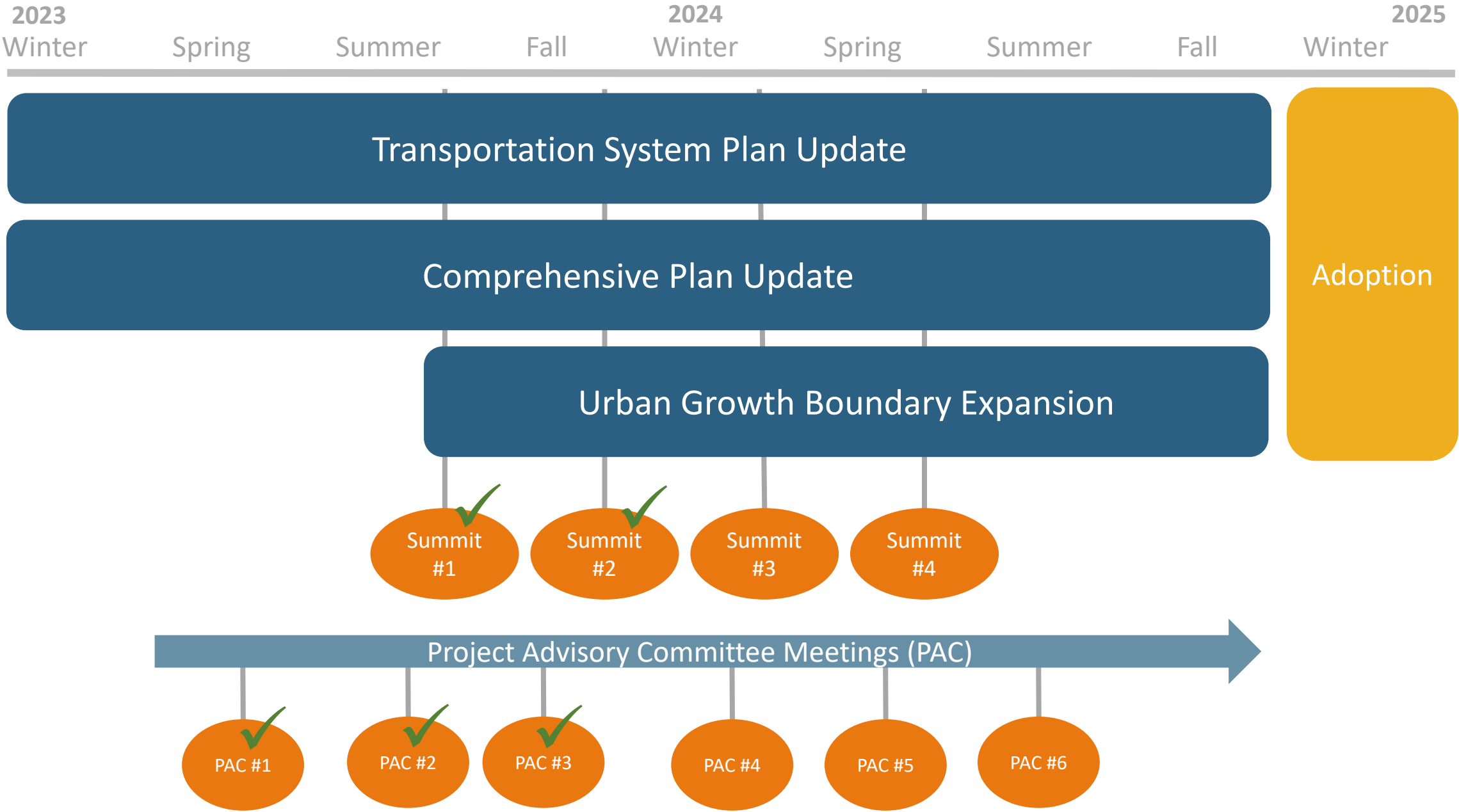
A man in a green shirt is pointing at a large map or plan displayed on a screen. The map shows various colored zones and lines. In the background, a presentation slide is visible with the text 'What's like now' and 'Slide 4'. The scene appears to be a public meeting or a community planning session.

Evaluate input from tonight's activity

Develop alternative growth scenarios that reflect vision themes and input

Draft goals and policies around those themes

Next Steps



Thank you!



<https://publicinput.com/cultivatingcanby>