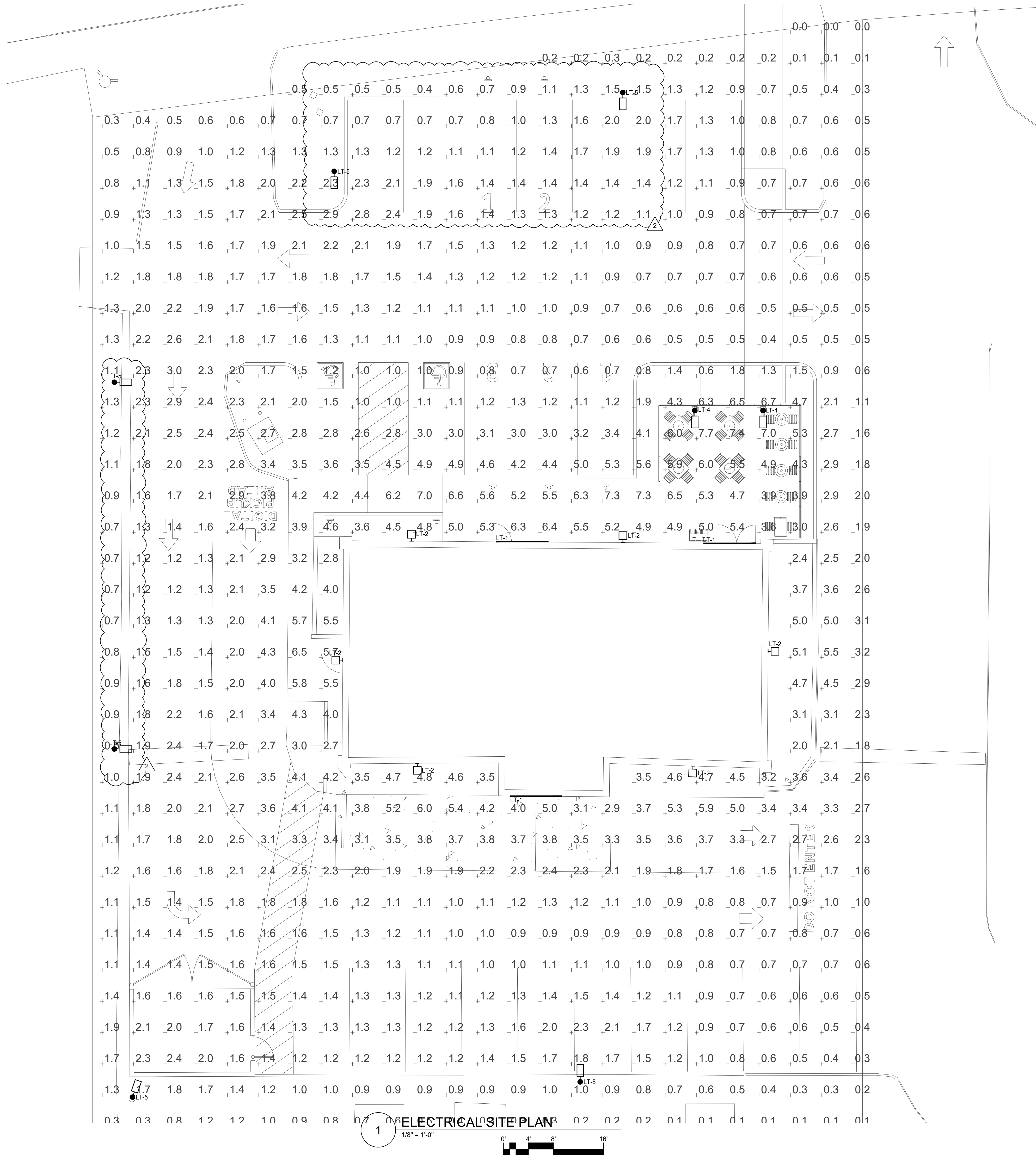


SCHMIDT
ARCHITECTS, P.C.
 16101 SW 72ND AVENUE
 SUITE 135
 PORTLAND, OR 97224
 (503) 220-8517
 www.schmidtarchitectspc.com



SYMBOLS LIST	
	FLUSH ELECTRICAL PANEL
	TRANSFORMER
	JUNCTION BOX (IN-GRADE)
	METER AND SOCKET
	GFCI DUPLEX RECEPTACLE
	BRANCH CIRCUIT WITH GROUND CONDUCTOR
	NEUTRAL CONDUCTOR
	PHASE CONDUCTOR
	HOMERUN ARROW
	PLAN NOTE MARK

LINETYPE LEGEND	
	UNDER GROUND
	ABOVE GROUND, IN WALL, CEILING, ETC.
	NEW EQUIPMENT (TYPICAL)

LIGHTING DEVICES	
	WALL MOUNTED LIGHT FIXTURE
	SURFACE MOUNTED TAPE LIGHT
	POLE MOUNTED LIGHT FIXTURE

LIGHTING SCHEDULE	
TYPE	DESCRIPTION
LT-1	SURFACE MOUNTED OUTDOOR LED TAPE LIGHT, OPAL LENS, 24VDC, 41K, 170 LUMENS/FT. MOUNTED ON UNDERSIDE OF OVERHANG (PARADIGM LED #PLESRK 20-41 67C 24 XX) (2VA/FT) MOUNTED IN CHANNELS (PARADIGM LED #AMC 2410 S O X)
LT-2	LED WALL PACK W/ 2ME DISTRIBUTION, 4L LUMEN PACKAGE (4,270 LUMENS), 5700K, 70 CRI, 120-277V, BRONZE HOUSING, MOUNTED AT 11'-6" (CREE #XSPWB-WM-2ME-4C57KUL-BZ) (31VA)
LT-3	LED DIE-CAST ALUMINUM EMERGENCY WALL MOUNTED FIXTURE W/ BACKUP, 6V, 600 LUMENS OUTPUT BATTERY (SIGNIFY #PLEMBZ) (3VA)
LT-4	POLE MOUNTED LED AREA LIGHT W/ 1,297 LUMENS, 71 CRI, 3000K, 120-277V (RAB #ALED10Y) (12 VA) MOUNTED ON A 10' SQUARE POLE (RAB #PS4-11-10D2)
LT-5	POLE MOUNTED LED AREA LIGHT W/ 5,000 LUMENS, 70 CRI 5700K, 120-277V AND BACK SIDE SHIELD (CREE #XSPSM-D-HT-3ME-5L-57K7-UL-BK-XA-SP1BLS) (47 VA) MOUNTED ON A 20' SQUARE POLE (CREE #SSS-4-7-20)

MAJ @ CANBY 'QSR' REMODEL
 597 SW 1st AVENUE
 CANBY, OREGON 97013
 MAJ DEVELOPMENT

PROJECT NO.	2023-108
DATE :	
DRAWN BY :	
CHECKED BY :	
REVISIONS	
#1	TENANT COMMENTS 10/16/2023
#2	PLAN STAFF COMMENTS 01/05/2024

ELECTRICAL PHOTOMETRIC

LC
1.1

6915 S MACADAM AVE SUITE 200
 PORTLAND, OREGON 97219
 CONTACT: KORI HANSEN
 PHONE: (503) 892-1188
 engineering@mke-inc.com
 Since 1979



ELECTRICAL SITE PLAN
 1/8" = 1'-0"
 0' 4' 8' 16'

