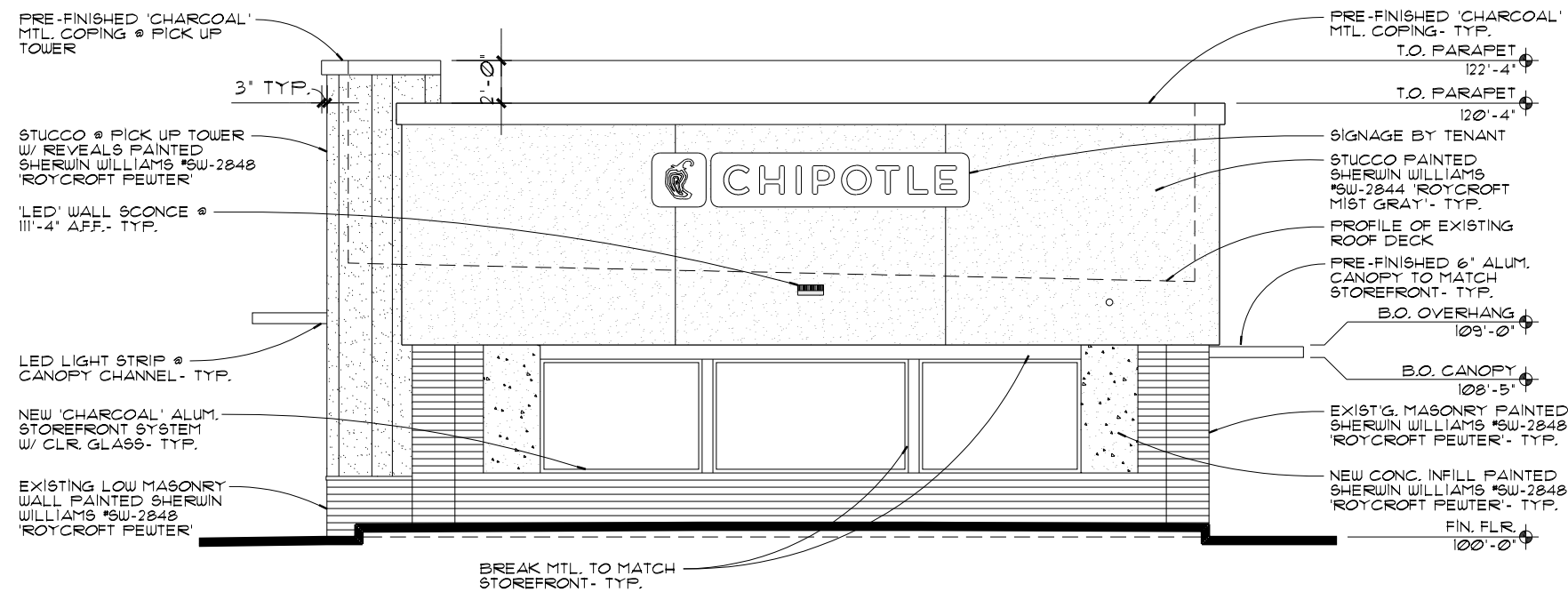


NORTH ELEVATION

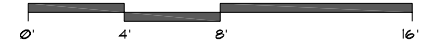


MATERIAL SUMMARY TABLE:

OVERALL FACADE AREA:	985 SF.
PRIMARY MATERIAL (STUCCO):	686 SF. (70%)
SECONDARY MATERIAL (BRICK):	243 SF. (25%)
ACCENT MATERIAL (METAL TRIM):	56 SF. (5%)



2 EAST ELEVATION



MATERIAL SUMMARY TABLE:

OVERALL FACADE AREA:	668 SF.
PRIMARY MATERIAL (STUCCO):	467 SF. (70%)
SECONDARY MATERIAL (BRICK):	158 SF. (24%)
ACCENT MATERIAL (METAL TRIM):	43 SF. (6%)

SCHMIDT
ARCHITECTS, P.C.
16101 SW 72ND AVENUE
SUITE 135
PORTLAND, OR 97224
(503) 220-8517
www.schmidtarchitectspc.com

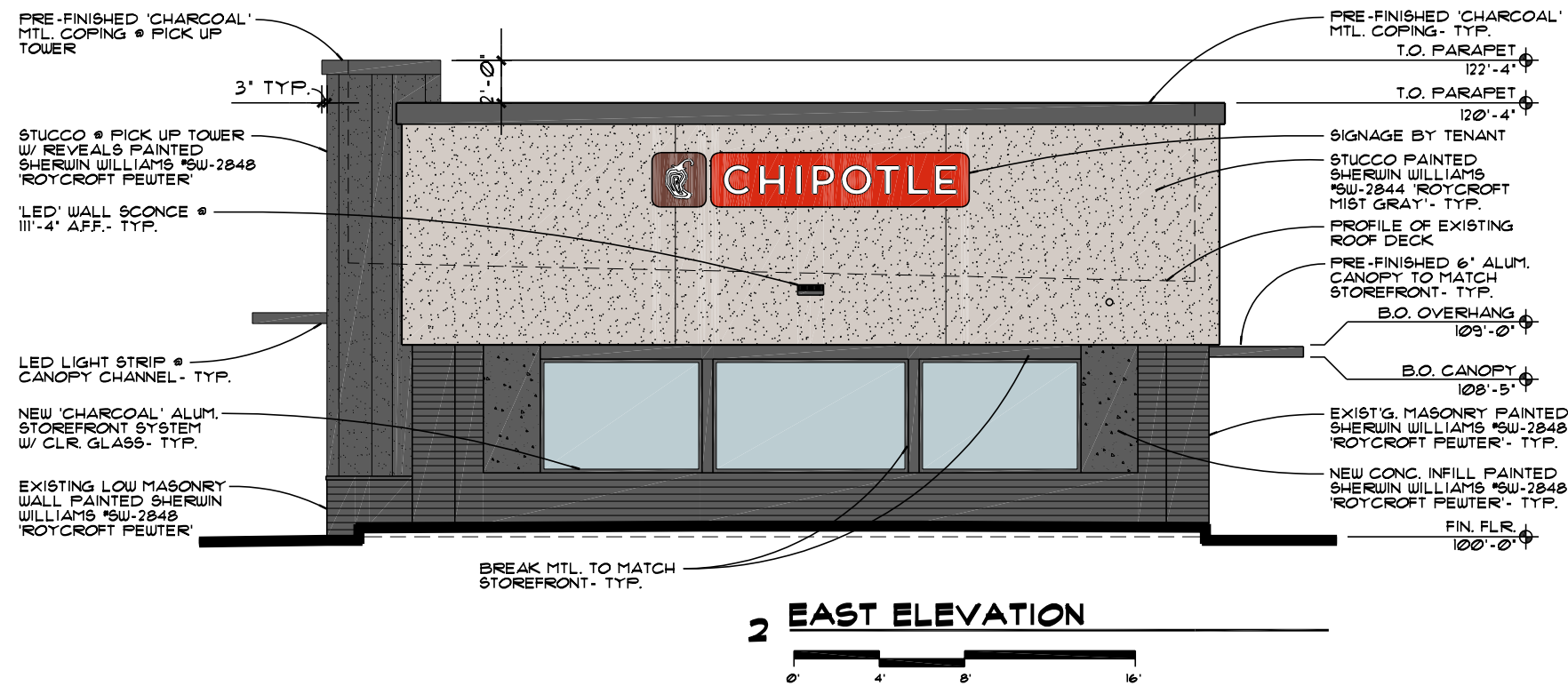
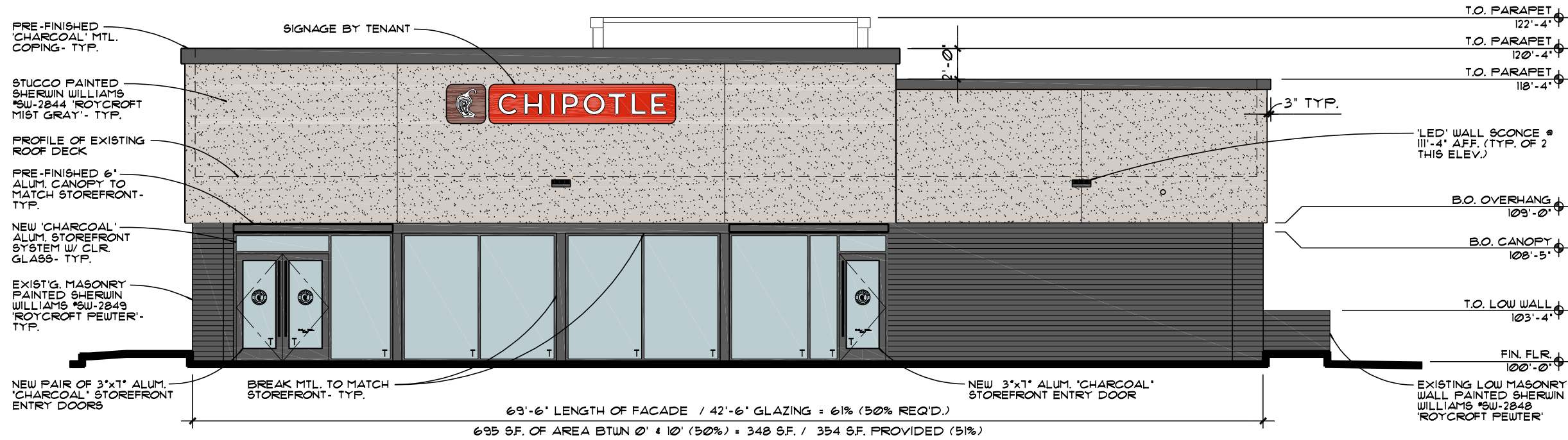
MAJ @ CANBY 'QSR' REMODEL
597 SW 1st AVENUE
CANBY, OREGON
MAJ DEVELOPMENT

PROJECT NO.
2023-108
DATE:
10-16-2023
DRAWN BY:
GAH
CHECKED BY:
FMS

REVISIONS

2023-108\Floorplan / Layout5

A2



SCHMIDT
 ARCHITECTS, P.C.
 16101 SW 72ND AVENUE
 SUITE 135
 PORTLAND, OR 97224
 (503) 220-8517
 www.schmidtarchitectspc.com

MAJ @ CANBY 'QSR' REMODEL
 597 SW 1st AVENUE
 CANBY, OREGON
MAJ DEVELOPMENT

PROJECT NO.
2023-108

DATE:
 10-16-2023

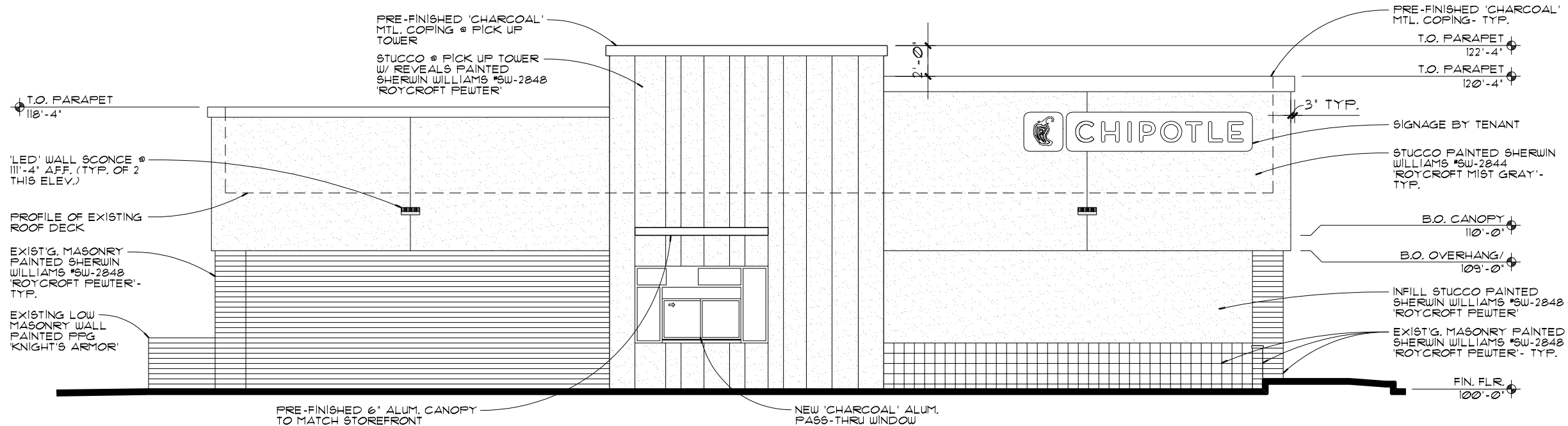
DRAWN BY:
 GAH

CHECKED BY:
 FMS

REVISIONS

2023-108\Floorplan /
 Layout5 (color)

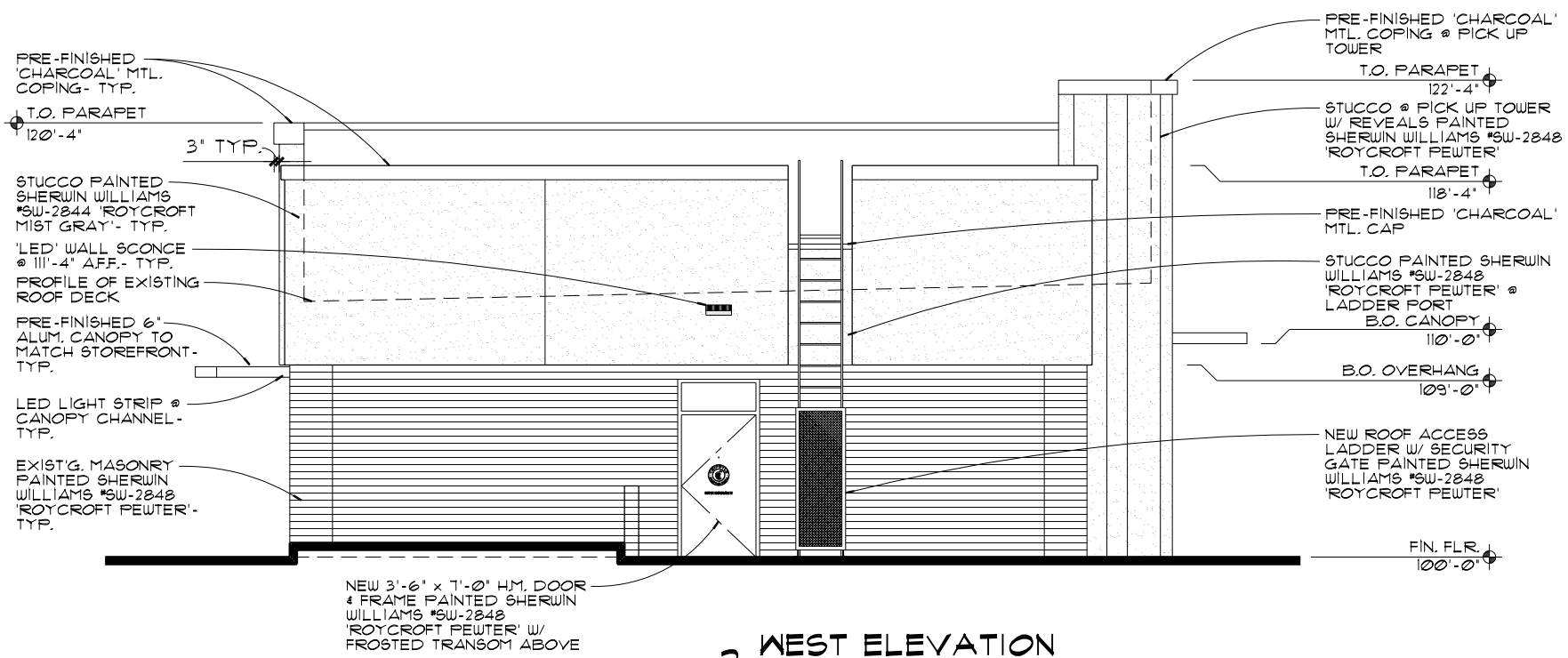
A2



SOUTH ELEVATION

MATERIAL SUMMARY TABLE:

OVERALL FACADE AREA:	1362 SF.
PRIMARY MATERIAL (STUCCO):	981 SF. (72%)
SECONDARY MATERIAL (BRICK):	320 SF. (24%)
ACCENT MATERIAL (METAL TRIM):	61 SF. (4%)



WEST ELEVATION

MATERIAL SUMMARY TABLE:

OVERALL FACADE AREA:	733 SF.
PRIMARY MATERIAL (STUCCO):	410 SF. (56%)
SECONDARY MATERIAL (BRICK):	294 SF. (40%)
ACCENT MATERIAL (METAL TRIM):	29 SF. (4%)

SCHMIDT
ARCHITECTS, P.C.
16101 SW 72ND AVENUE
SUITE 135
PORTLAND, OR 97224
(503) 220-8517
www.schmidtarchitectspc.com

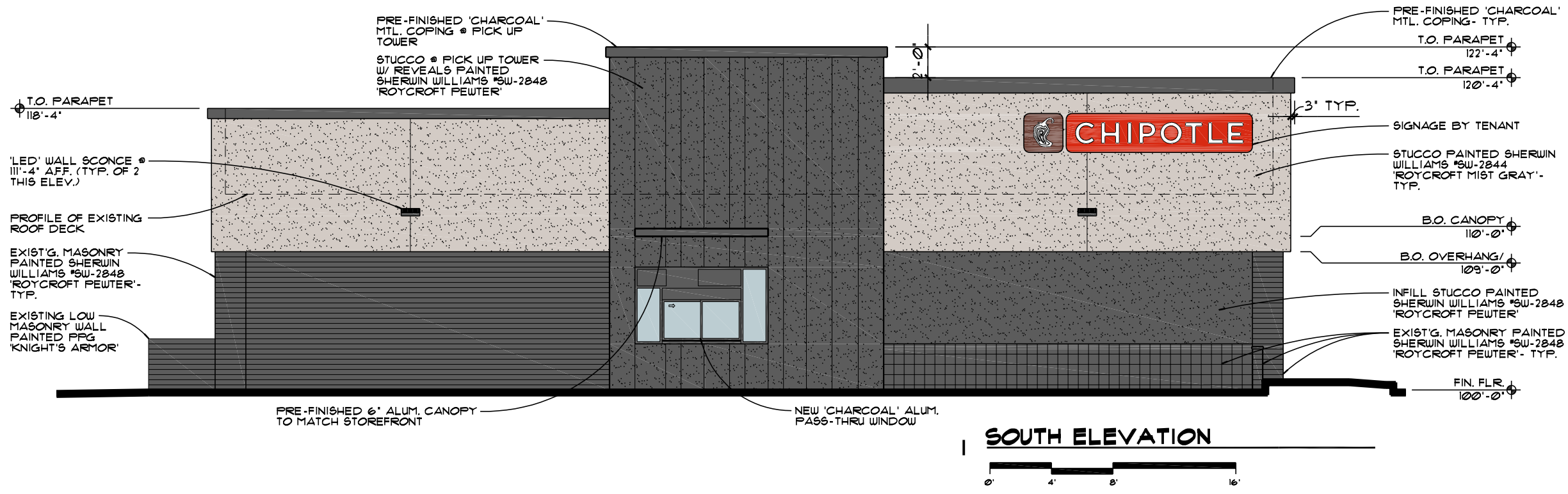
MAJ @ CANBY 'QSR' REMODEL
597 SW 1st AVENUE
CANBY, OREGON
MAJ DEVELOPMENT

PROJECT NO.
2023-108
DATE:
10-16-2023
DRAWN BY:
GAH
CHECKED BY:
FMS

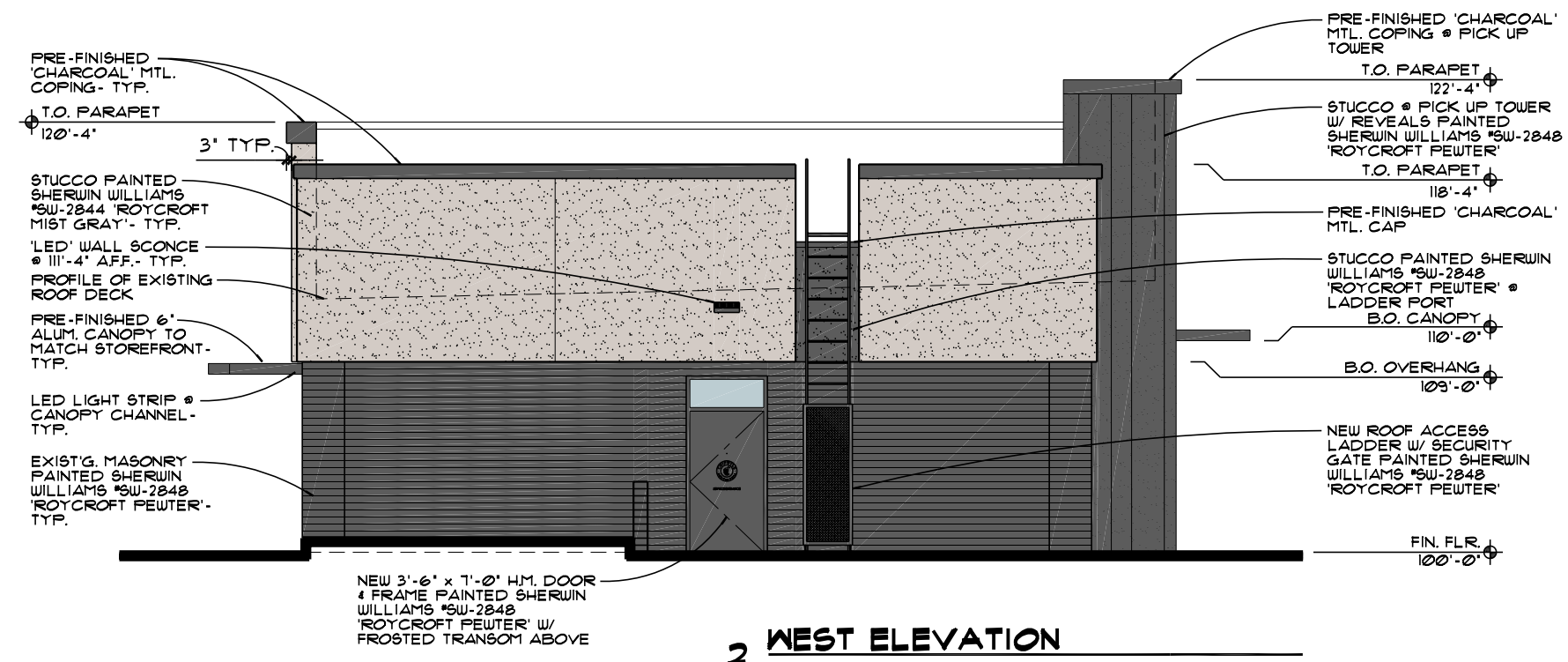
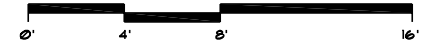
REVISIONS

2023-108's floorplan /
Layout 6

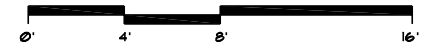
A3



1 SOUTH ELEVATION



2 WEST ELEVATION



SCHMIDT
 ARCHITECTS, P.C.
 16101 SW 72ND AVENUE
 SUITE 135
 PORTLAND, OR 97224
 (503) 220-8517
 www.schmidtarchitectspc.com

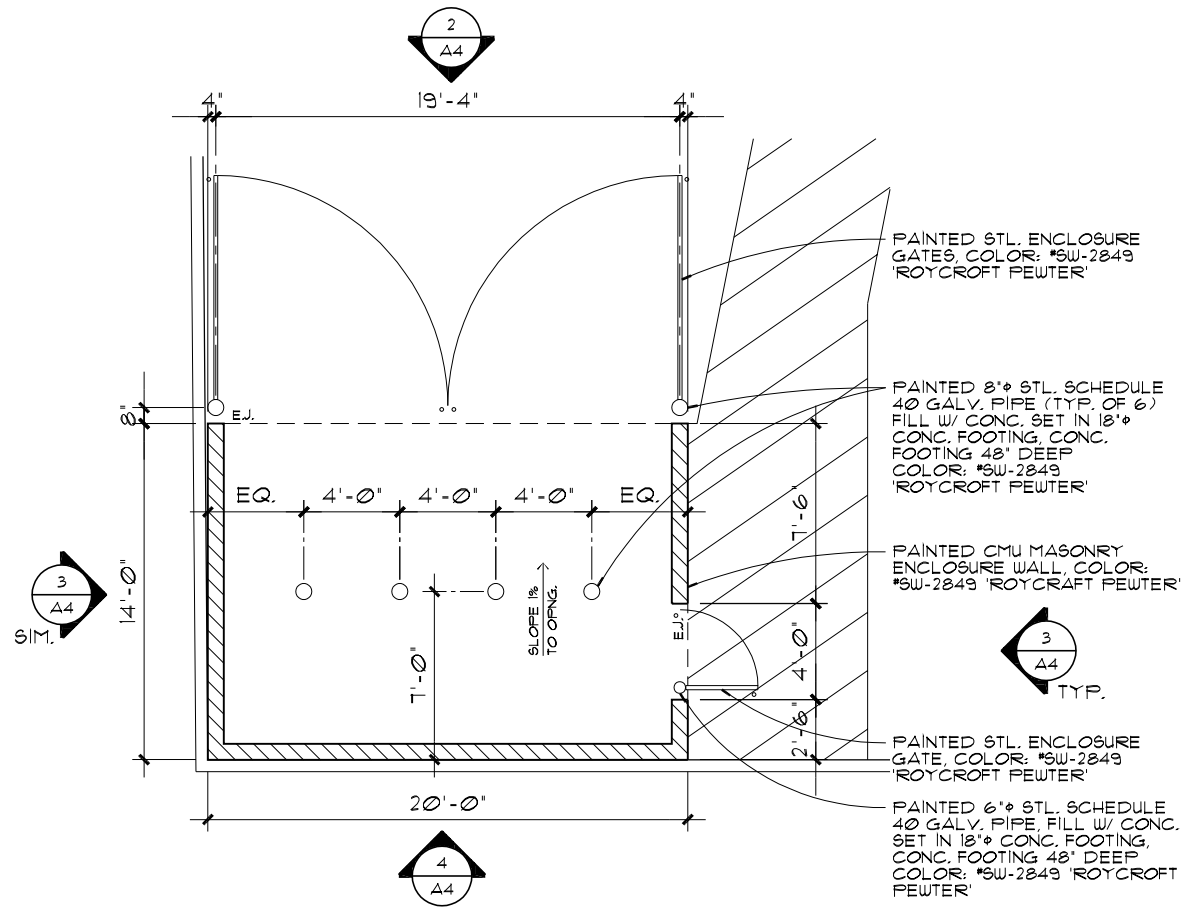
MAJ @ CANBY 'QSR' REMODEL
 597 SW 1st AVENUE
 CANBY, OREGON
MAJ DEVELOPMENT

PROJECT NO.
2023-108
 DATE:
 10-16-2023
 DRAWN BY:
 GAH
 CHECKED BY:
 FMS

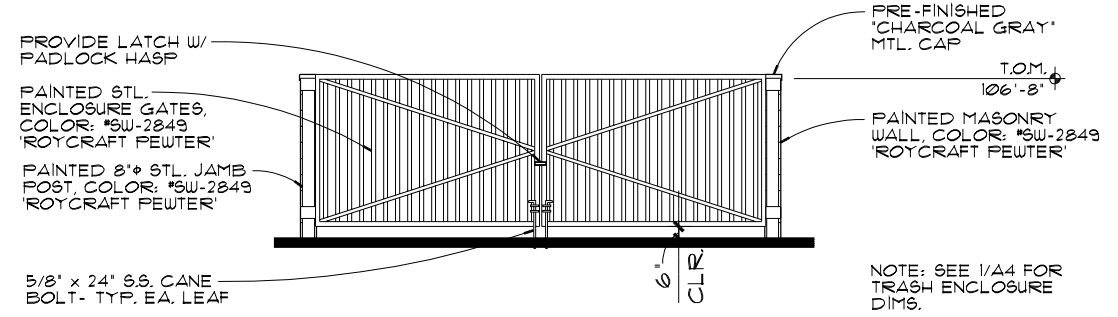
REVISIONS

2023-108/Floorplan /
 Layout6 (color)

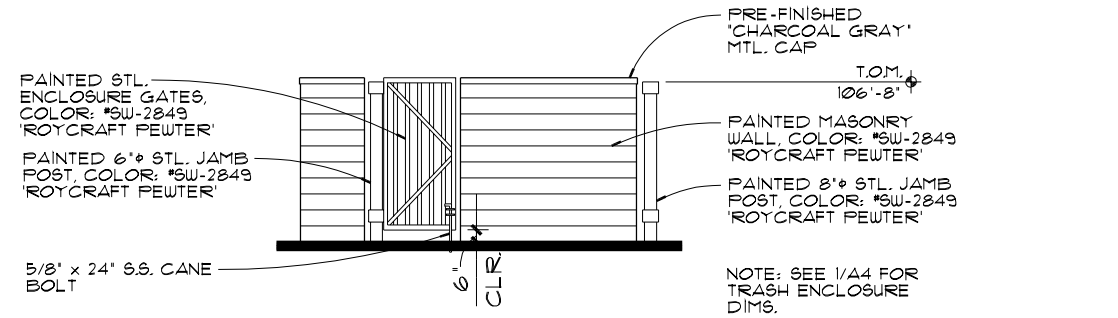
A3



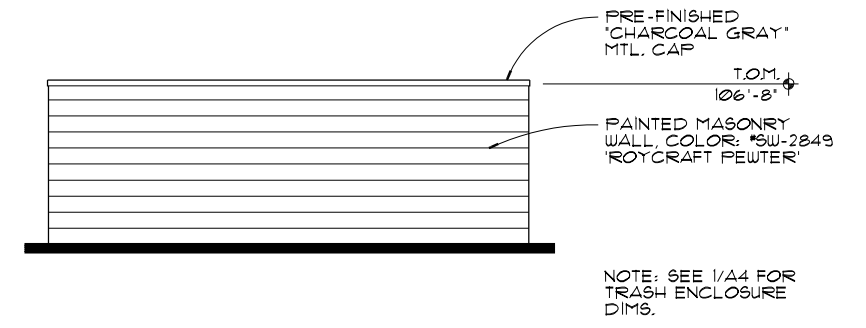
TRASH ENCLOSURE PLAN
1/8" = 1'-0"



2 TRASH ENCLOSURE FRONT ELEVATION
1/8" = 1'-0"



3 TRASH ENCLOSURE SIDE ELEVATION
1/8" = 1'-0"



4 TRASH ENCLOSURE REAR ELEVATION
1/8" = 1'-0"

SCHMIDT
ARCHITECTS, P.C.
16101 SW 72ND AVENUE
SUITE 135
PORTLAND, OR 97224
(503) 220-8517
www.schmidtarchitectspc.com

MAJ @ CANBY 'QSR' REMODEL
597 SW 1st AVENUE
CANBY, OREGON
MAJ DEVELOPMENT

PROJECT NO.
2023-108

DATE:
10-16-2023

DRAWN BY:
GAH

CHECKED BY:
FMS

REVISIONS

NO.	DESCRIPTION

2023-108\Floorplan / Layout1

A4